



USER GUIDE



WiShare
Wireless TV Adapter

SMCWTVA100



Wireless TV Adapter User Guide

SMC[®]

N e t w o r k s
No. 1, Creation Road III,
Hsinchu Science Park,
30077, Taiwan, R.O.C.
TEL: +886 3 5638888
Fax: +886 3 6686111

July 2013
E072013-KS-R02

Information furnished by SMC Networks, Inc. (SMC) is believed to be accurate and reliable. However, no responsibility is assumed by SMC for its use, nor for any infringements of patents or other rights of third parties which may result from its use. No license is granted by implication or otherwise under any patent or patent rights of SMC. SMC reserves the right to change specifications at any time without notice.

Copyright © 2013 by

SMC Networks, Inc.

No. 1 Creation Road III,
Hsinchu Science Park,
30077, Taiwan, R.O.C.

All rights reserved

Trademarks:

SMC is a registered trademark; and Barricade, EZ Switch, TigerStack, TigerSwitch, and TigerAccess are trademarks of SMC Networks, Inc. Other product and company names are trademarks or registered trademarks of their respective holders.

WARRANTY AND PRODUCT REGISTRATION

To register SMC products and to review the detailed warranty statement, please refer to the Support Section of the SMC Website at <http://www.smc.com>.

COMPLIANCES

FEDERAL COMMUNICATION COMMISSION INTERFERENCE STATEMENT

This equipment has been tested and found to comply with the limits for a Class B digital device, pursuant to part 15 of the FCC Rules. These limits are designed to provide reasonable protection against harmful interference in a residential installation. This equipment generates, uses and can radiate radio frequency energy and, if not installed and used in accordance with the instructions, may cause harmful interference to radio communications. However, there is no guarantee that interference will not occur in a particular installation. If this equipment does cause harmful interference to radio or television reception, which can be determined by turning the equipment off and on, the user is encouraged to try to correct the interference by one or more of the following measures:

- ◆ Reorient or relocate the receiving antenna
- ◆ Increase the separation between the equipment and receiver
- ◆ Connect the equipment into an outlet on a circuit different from that to which the receiver is connected
- ◆ Consult the dealer or an experienced radio/TV technician for help

This device complies with Part 15 of the FCC Rules. Operation is subject to the following two conditions: (1) This device may not cause harmful interference, and (2) this device must accept any interference received, including interference that may cause undesired operation.

FCC Caution: Any changes or modifications not expressly approved by the party responsible for compliance could void the user's authority to operate this equipment.



NOTE: The manufacturer is not responsible for any radio or TV interference caused by unauthorized modifications to this equipment. Such modifications could void the user's authority to operate the equipment.

CE MARK DECLARATION OF CONFORMANCE FOR EMI AND SAFETY (EEC)



Declaration of Conformity (DoC) can be obtained from
www.smc.com

-> support -> download -> declarations & certifications

This information technology equipment complies with the requirements of the Council Directive 89/336/EEC on the Approximation of the laws of the Member States relating to Electromagnetic Compatibility and 73/23/EEC for electrical equipment used within certain voltage limits and the Amendment Directive 93/68/EEC. For the evaluation of the compliance with these Directives, the following standards were applied:

- ◆ Health (Article 3.1(a) of the R&TTE Directive)
 - RF exposure related standards use ERC REC 519/EC
- ◆ Safety (Article 3.1(a) of the R&TTE Directive)
 - LVD: EN60950-1:2006+A11:2009+A1:2010
- ◆ Electromagnetic compatibility (Article 3.1 (b) of the R&TTE Directive)
 - EN 301 489-1 V.1.8.1
 - EN 301-489-17 V2.1.1
- ◆ Radio frequency spectrum usage (Article 3.2 of the R&TTE Directive)
 - EN 300 328 V1.7.1
 - EN 301 893 V1.6.1

ABOUT THIS GUIDE

PURPOSE This guide details the hardware features of the wireless TV adapter, including its physical and performance-related characteristics, and how to install the device and use its configuration software.

AUDIENCE This guide is for Smart Phone and PC users with a working knowledge of computers. You should be familiar with Windows and Android operating system concepts.

CONVENTIONS The following conventions are used throughout this guide to show information:



NOTE: Emphasizes important information or calls your attention to related features or instructions.



CAUTION: Alerts you to a potential hazard that could cause loss of data, or damage the system or equipment.



WARNING: Alerts you to a potential hazard that could cause personal injury.

RELATED PUBLICATIONS The following publication gives basic information on how to install and use the wireless TV adapter.

Quick Installation Guide

Also, as part of the wireless TV adapter's software, there is online help that describes all configuration related features.

REVISION HISTORY This section summarizes the changes in each revision of this guide.

JULY 2013 REVISION

Adds new features released for the second firmware version.

OCTOBER 2012 REVISION

This is the first revision of this guide.

CONTENTS

WARRANTY AND PRODUCT REGISTRATION	4
COMPLIANCES	5
ABOUT THIS GUIDE	7
CONTENTS	8
FIGURES	11
TABLES	14
1 INTRODUCTION	15
Overview of the Wireless TV Adapter	15
Main Features	15
Package Contents	16
Key Hardware Features	16
2 SYSTEM REQUIREMENTS AND CONNECTIONS	18
System Requirements for PC to TV Mode	18
System Requirements for Mirror PBC and PIN Mode (Miracast)	18
System Requirements for Media Share Mode (DLNA)	19
3 INSTALLATION GUIDE	20
How to Connect the TV Adapter	20
Install Screencasting Software	21
Connect a Device to the SMCWTV100	21
Non-Bridged Connection Setups	26
Wired Connection Setup	26
Wireless Connection Setup	27
Hardware Reset to Factory Default Settings	27
4 SOFTWARE INSTALLATION	29
PC to TV and AirFun Installation (Windows)	29
iMediaShare App Installation (Android)	39
iMediaShare App Installation (iOS)	42

5 OPERATION MODES	45
PC to TV Mode	45
Using PC to TV (Windows PC Users)	45
Additional PC to TV Controller Menu Items	47
Mirror PIN and PBC Mode	48
Mirror PBC Versus PIN Mode	48
Setup Mirror PBC or PIN From an Android Device	49
Media Share Mode (DLNA Mode)	53
Using AirFun (Windows PC Users)	53
Using iMediaShare (Android Users)	58
Using iMediaShare (iOS Users)	60
NAS (USB) Mode	63
Using NAS Mode	63
Additional Controls In NAS (USB) Mode	64
Firmware Upgrade	64
Remote Options	65
Setup Using the OSD Menu	67
Network	68
Audio	69
Video	69
System	70
6 WEB CONFIGURATION	71
Network Topology and Settings	71
Quick Setting	71
Network Settings	71
Wireless Configuration	72
Basic Settings	72
Security Settings	73
Band Settings	73
Virtual AP Bridge	74
Display Output Setting	75
Display Setting	75
Web UI Password	75
Password Setting	75
Mode Setting	76

Mode Switch	76
Additional Functions	77
Status	77
Configuration	77
Remote	78
Restart	78
Reset to Factory Default Configuration	78
7 SPECIFICATIONS	79

FIGURES

Figure 1: Rear View	16
Figure 2: Side View	17
Figure 3: Connecting to the SMCWTVA100 using a PC	22
Figure 4: Enter the URL of the SMCWTVA100	22
Figure 5: Web UI Login	23
Figure 6: Quick Setting	23
Figure 7: Stand-Alone Connection Setup	24
Figure 8: Bridge to Wireless Connection Setup	25
Figure 9: Bridge to Ethernet (Wired) Connection Setup	26
Figure 10: “Wired” Connection Setup	27
Figure 11: Wireless Connection Setup	27
Figure 12: Setup Wizard Start	29
Figure 13: Google Play Store	39
Figure 14: Search DLNA Software App - Android Users	39
Figure 15: Install iMediaShare App - Android Users	40
Figure 16: Download iMediaShare App - Android Users	40
Figure 17: iMediaShare App is Installed - Android Users	41
Figure 18: Launch iMediaShare App - Android Users	41
Figure 19: App Store	42
Figure 20: Search DLNA Software App - iOS Users	42
Figure 21: Install iMediaShare App - iOS Users	43
Figure 22: iMediaShare App Install Complete - iOS Users	43
Figure 23: Activate iMediaShare App - iOS Users	44
Figure 24: PC to TV Mode Screen	46
Figure 25: PC to TV Icon	46
Figure 26: PC to TV Server Selection and Login Window	46
Figure 27: PC to TV Controller	47
Figure 28: Mirror Mode—SMCWTVA100 in Mirror PBC and PIN Mode.	49
Figure 29: Mirror Mode—Accessing Miracast Within Android	49
Figure 30: Mirror Mode—Launching Miracast.	50
Figure 31: Mirror Mode—Selecting the SMCWTVA100	50

Figure 32: Mirror Mode—Connecting	51
Figure 33: Mirror Mode—Connected	52
Figure 34: Media Share Mode	53
Figure 35: Connect to SMCWTVA100	53
Figure 36: Launch AirFun	54
Figure 37: Search and Connect to Device	54
Figure 38: AirFun Activate	54
Figure 39: Select Photos	55
Figure 40: View Photo	55
Figure 41: Select Audio File	56
Figure 42: Play Audio File	56
Figure 43: Select Video File	57
Figure 44: Play Video	57
Figure 45: Connect to SMCWTVA100	58
Figure 46: Launch iMediaShare	58
Figure 47: Select the Desired File Type	59
Figure 48: Select a Photo	59
Figure 49: Photo Ready for Display	60
Figure 50: Connect to SMCWTVA100	60
Figure 51: Launch iMediaShare	61
Figure 52: Select the Desired File Type	61
Figure 53: Select a Photo	62
Figure 54: Photo Ready for Display	62
Figure 55: USB Mode	63
Figure 56: Remote Functions for NAS (USB) Mode	64
Figure 57: Upgrade Firmware	65
Figure 58: Upgrade Firmware Completed	65
Figure 59: Remote Control	66
Figure 60: Download AirFun Page	67
Figure 61: Wireless LAN Setup	67
Figure 62: Setup Main Page	68
Figure 63: Network Settings	72
Figure 64: Wireless Settings - Basic Setting	73
Figure 65: Wireless Settings-Security Settings	73
Figure 66: Wireless Settings-Band Settings	74
Figure 67: Virtual AP Bridge	74

Figure 68: Display Settings	75
Figure 69: Password Setting	76
Figure 70: Mode Switch	76
Figure 71: Status Menu	77
Figure 72: Configuration Menu Item	77
Figure 73: Remote Menu Item	78
Figure 74: Restart Confirmation Dialog Box	78

TABLES

Table 1: System Requirements (PC to TV Mode)	18
Table 2: Current Miracast Devices Supported	18
Table 3: System Requirements (Media Share Mode)	19
Table 4: Remote Option Button Menus	66

This chapter includes these sections:

- ◆ [Overview of the Wireless TV Adapter](#)
- ◆ [Package Contents](#)
- ◆ [Key Hardware Features](#)

OVERVIEW OF THE WIRELESS TV ADAPTER

Enjoy all of your personal and online content on a big screen with a simple wireless connection. The SMCWTVA100 can use PC to TV, Media Share (DLNA or Digital Living Network Alliance), Miracast and USB drive transfer technology to share your mobile device or laptop content through a Wi-Fi link to your TV or room projector. You can sit back on a couch and enjoy your favorite movies, videos, photos, online shows and more, all in full HD. You can also make business presentations or play music, photos or video directly from your smartphone or tablet by Wi-Fi. The SMCWTVA100 can be used with Windows, Android, and Apple iOS systems to share your happiness.

- MAIN FEATURES**
- ◆ **PC to TV**—All PC video and audio output is “screencast” and displayed on your TV.
 - ◆ **Miracast**—Android smartphone screen and sound is “screencast” and displayed on your TV.
 - ◆ **MediaShare**—DLNA technology displays selected video, image, and sound files from PCs, tablets, and smartphones onto your TV.
 - ◆ **USB interface**—USB thumb or disk drive media files are displayed on your TV.
 - ◆ **Dual-band Wi-Fi connectivity** (2.4G or 5G Band 2T2R 300 Mbps)
 - ◆ **HDMI/CVBS support**—To support both new and previous generation televisions, monitors, and projectors.
 - ◆ **Micro-USB DC in port**—Any convenient USB power source can be used.
 - ◆ **Web UI**—Web UI (User Interface) with firmware upgrade capability.

PACKAGE CONTENTS

The packaging should contain the following items:

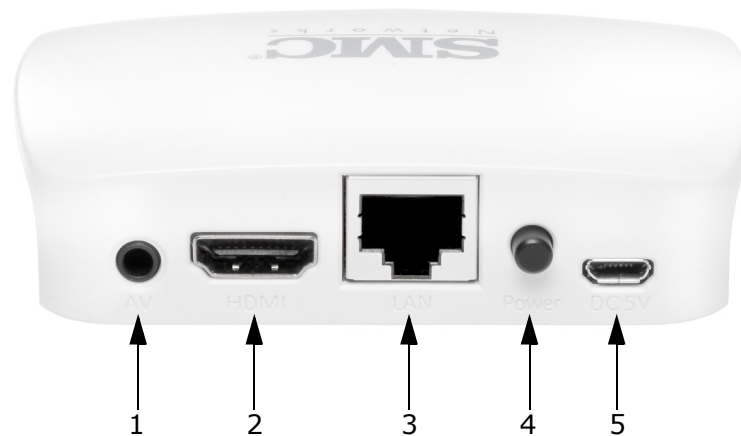
- ◆ SMCWTV100
- ◆ HDMI cable
- ◆ AV Cable
- ◆ Power adapter
- ◆ Quick Installation Guide
- ◆ Resource CD, including this User Guide and AirFun Software



NOTE: Make sure that the package contains the above items. If any of the listed items are damaged or missing, please contact your distributor.

KEY HARDWARE FEATURES

Figure 1: Rear View



The following items are located on the rear panel (from left to right).

1. AV

This CVBS port connects the TV adapter output signal to a TV or projector.

2. HDMI

This port connects the TV adapter output signal to a TV or projector.

3. ETHERNET LAN PORT

This port connects the TV adapter to a LAN over Ethernet. For example, you can connect it to a spare port on your home WI-FI router.

4. POWER BUTTON

When the DC power adapter is attached and connected to a power source, the power button must be depressed to power on the unit.

5. DC 5V

The micro-USB power socket is where you connect the power adapter. Use the power adapter provided with the TV adapter or any suitable device which can supply DC voltage over a USB connection.

Figure 2: Side View



The following items are located on the side panel (from left to right).

6. USB PORT

This port is for upgrading firmware only. Connect an external USB storage device, such as a thumb drive, to this port.

7. MODE BUTTON

Press the button to switch between PC to TV, Miracast PBC/PIN, MediaShare, and USB modes.

2

SYSTEM REQUIREMENTS AND CONNECTIONS

This chapter includes these sections:

- ◆ [System Requirements for PC to TV Mode](#)
- ◆ [System Requirements for Mirror PBC and PIN Mode \(Miracast\)](#)
- ◆ [System Requirements for Media Share Mode \(DLNA\)](#)

SYSTEM REQUIREMENTS FOR PC TO TV MODE

PC to TV software uses a proprietary protocol similar to Wi-Di however, instead of being limited to the few models that support Wi-Di, you can use it on any Windows 7 or Windows 8 OS computer.

Table 1: System Requirements (PC to TV Mode)

System Component	Requirement
PC or Laptop	CPU: 1.6 GHz or better Memory: 1.0 GB or better Network: 802.11g/n Wi-Fi and/or 100/1000 Mbps Ethernet

SYSTEM REQUIREMENTS FOR MIRROR PBC AND PIN MODE (MIRACAST)

Mirror PBC and PIN mode is supported by a limited number of Android 4.2 release devices. Please check the SMC website for a list of currently supported devices or check with your device's manufacturer. Currently the following devices are known to function correctly with the SMCWTV100 using Mirror mode:

Table 2: Current Miracast Devices Supported

Manufacturer	Model
Samsung	S2, S4, Note2, Note8
LG	Optimus G, LG-E975
Sony	Xperia Z, Xperia TX
Google	Nexus 4
Sharp	SH-10D
HTC	New HTC one
Xiaomi	2S



NOTE: Android 4.2 or higher smartphones and tablets with Miracast support for Wi-Fi Direct Transfer.

SYSTEM REQUIREMENTS FOR MEDIA SHARE MODE (DLNA)

The SMCWTVA100 is designed to be a DLNA-DMR (digital media renderer) device, which means you are able to stream video, music, and photo content from a PC (Windows 7 or Windows 8 OS), smartphone, or tablet-PC to your TV.

Table 3: System Requirements (Media Share Mode)

System Component	Requirement
PC or Laptop	CPU: 1.6 GHz or better Memory: 1.0 GB or better Network: 802.11g/n Wi-Fi and/or 100/1000 Mbps Ethernet
Smartphone	CPU: 800 MHz or better Memory: 256 MB or better Network: 802.11g/n Wi-Fi or better
Tablet	CPU: 600 MHz or better Memory: 256 MB or better Network: 802.11g/n Wi-Fi or better

The sections that follow describe the hardware and software installation procedures and some additional configuration required to connect your SMCWTVA100 into your existing LAN or WLAN. The following sections are included:

- ◆ [How to Connect the TV Adapter](#)
- ◆ [Install Screencasting Software](#)
- ◆ [Connect a Device to the SMCWTVA100](#)
- ◆ [Non-Bridged Connection Setups](#)

HOW TO CONNECT THE TV ADAPTER

For a basic “stand-alone” hardware install of the TV adapter, perform the following steps:



NOTE: If Internet is required for your display function, before installing the TV adapter, make sure your PC, smartphone or tablet-PC is successfully connected to the Internet through a broadband service. If there are any problems, first contact your ISP to resolve them.

1. Plug in the power cord.
2. Connect the HDMI cable to the HDMI output of the SMCWTVA100 and to the HDMI input of your TV, projector or monitor.
3. To turn on the SMCWTVA100, push in the power button until it clicks in the depressed position.
4. Follow the on-screen instructions to set up the SMCWTVA100. The system default mode is PC to TV mode, which means it is ready to display any media from your PC including presentations, video, music, and photos.
5. You can switch between five modes by pushing the mode button on the side of the unit (next to the USB port) two or three times. The on-screen instructions will prompt you to push the button again after the first or second push.

INSTALL SCREENCASTING SOFTWARE

Whether you want to use a PC, tablet or smartphone with the SMCWTVA100, your devices will need screencasting software to be able to display and play your device contents.

1. Download and install the required software on your PC, smartphone, or tablet.
 - For Windows 7 and 8 users, install the PC to TV and AirFun application from the Resource CD. Follow the on-screen instructions. See ["PC to TV and AirFun Installation \(Windows\)" on page 29](#).
 - For Android users, install a DLNA software app, which can be downloaded from Google Play (formerly Android Market). Supported DLNA App: iMediashare. See ["iMediaShare App Installation \(Android\)" on page 39](#).
 - For Apple iOS users, install a DLNA software app, which can be downloaded from the Apple App Store. Supported DLNA App: iMediashare. See ["iMediaShare App Installation \(iOS\)" on page 42](#).

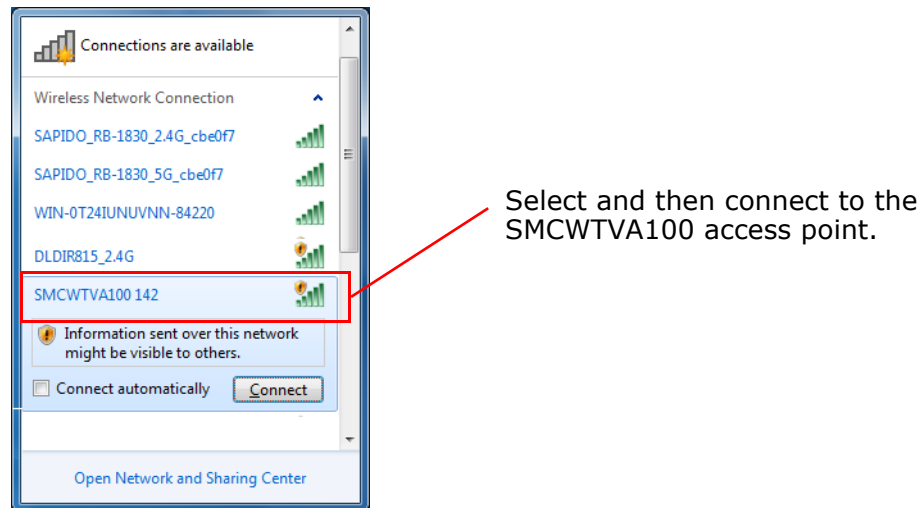
CONNECT A DEVICE TO THE SMCWTVA100

The SMCWTVA100 operates as a wireless access point (AP) without Internet access. If you need bridged access to the Internet through the SMCWTVA100 to a local LAN with internet connectivity, such as your wireless router, you must configure the network settings.

The default setting for the SMCWTVA100 is "Virtual AP only" (stand-alone) mode. To use this device either in stand-alone mode or with an Internet connection, perform the procedure as follows:

1. Connect the SMCWTVA100. See ["How to Connect the TV Adapter" on page 20](#).
2. Connect your laptop, smartphone, or tablet-PC to the SMCWTVA100 using Wi-Fi. The SMCWTVA100 AP default SSID is the shown on the initial screen as SMCWTVA100 xxx. See [Figure 4 on page 22](#); the "Name:" field.

Figure 3: Connecting to the SMCWTVA100 using a PC



3. Enter the URL of the SMCWTVA100 Web UI (<http://192.168.59.254/remote/admin.html>) into the address bar of your web browser. See [Figure 4](#) below; the "Setup:" field.

Figure 4: Enter the URL of the SMCWTVA100



4. When the SMCWTVA100 Web UI finishes loading, as shown in [Figure 5](#), login with the password:

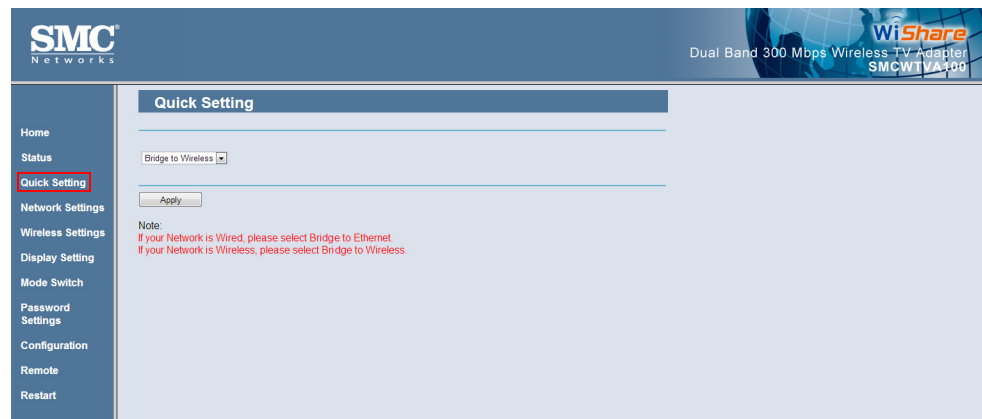
- smcadmin

Figure 5: Web UI Login



5. In the menu selection on the left, click on the "Quick Setting" menu item. The Quick Setting menu appears as shown in [Figure 6](#).

Figure 6: Quick Setting



6. The Quick Setting menu allows your PC, tablet or smartphone to use a wireless connection to the SMCWTV100 to screencast over and, if necessary, simultaneously allow your device to have Internet access.

Your device can use the SMCWTV100 as a bridge to a local Internet connection such as an Internet router or connect to it from a local LAN or WLAN. Select one of the three bridge modes in the drop-down menu:

- To bridge (connect) the SMCWTV100 to your local Internet connection over wireless (see [Figure 8 on page 25](#)) select, "Bridge to Wireless" from the drop-down menu and click Apply. Go to [Step 7 on page 24](#).
- To bridge (connect) the SMCWTV100 to your Internet connection over an Ethernet cable (see [Figure 9 on page 26](#)) select, "Bridge to Ethernet" from the drop-down menu and go to [Step 8 on page 25](#).



NOTE: Using an Ethernet cable can increase your device's Internet speed as compared to the "Bridge to Wireless" mode..

- To use your SMCWTVA100 without an Internet connection (no bridge, see [Figure 7 on page 24](#)), select "Virtual AP only" (default setting). Click Apply and no further steps are necessary.

You are now ready to use the SMCWTVA100 in the Virtual AP (stand-alone) configuration. Go to ["Operation Modes" on page 45](#) for procedures on how to screencast.

Figure 7: Stand-Alone Connection Setup

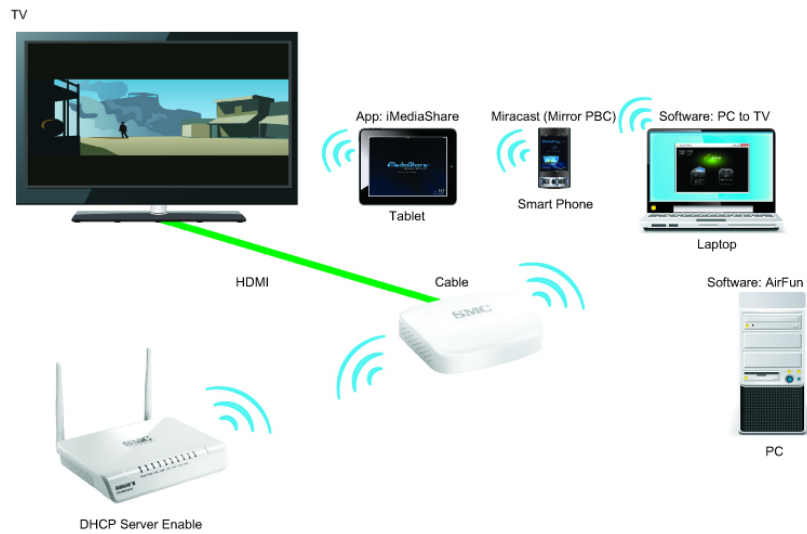


7. (Note: Bridge to Wireless only as shown in [Figure 8](#))

Click the "Scan AP" button and click to select the 802.11 wireless access point that you would like to bridge the internet from.

The SMCWTVA100 will restart and connect to the wireless AP that you selected, giving you both screencast and Internet connectivity. No further steps are necessary you are now ready to use the SMCWTVA100 in the Bridge to Wireless configuration. Go to ["Operation Modes" on page 45](#) for procedures on how to screencast.

Figure 8: Bridge to Wireless Connection Setup



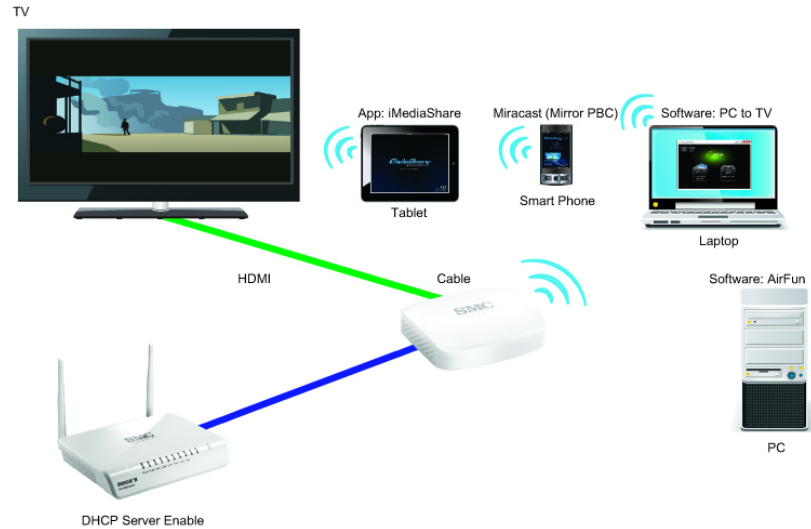
NOTE: The device will receive a new IP address from the wireless AP that it connects to. Use that new IP address to log into the device from your web browser. The new address and URL will be shown on the initial screen that is output from the HDMI connection to a display device.

8. (Note: Bridge to Ethernet only, as shown in [Figure 9](#))

Connect an RJ-45 Ethernet cable from the device's RJ-45 port to a suitable Internet connection and then click Apply in the Quick Settings menu with Bridge To Ethernet selected in the drop-down menu.

The SMCWTVA100 will reboot to receive a new IP address over the wired internet connection. No further steps are necessary you are now ready to use the SMCWTVA100 in the Bridge to Ethernet configuration. Go to ["Operation Modes" on page 45](#) for procedures on how to screencast.

Figure 9: Bridge to Ethernet (Wired) Connection Setup



NOTE: The SMCWTVA100 will receive a new IP address from the LAN it connected to over the Ethernet cable. Use that IP address to log into the device from your web browser. The new address and URL will be shown on the initial screen that is output from the HDMI connection to a display device.

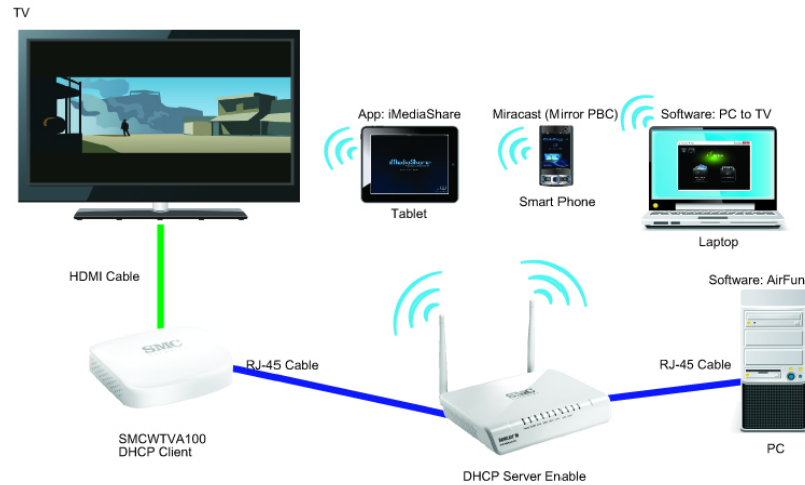
NON-BRIDGED CONNECTION SETUPS

If your PCs, smartphones, and tablets already connect to a local LAN or WLAN that the SMCWTVA100 can also connect to, then it is not necessary to connect your devices directly over wireless to the SMCWTVA100 except in Miracast or Mirror mode (Miracast protocol is a point-to-point wireless only protocol). You can connect the SMCWTVA100 to your local LAN or WLAN and then use its new IP address to connect to it from your devices on the same LAN (WLAN).

WIRED CONNECTION SETUP

In this mode, as shown in [Figure 10](#), your SMCWTVA100 connects directly to a local LAN over Ethernet cable. All devices (except those using Miracast) can connect to the SMCWTVA100 over the local W/LAN in order to screencast. Use the "Bridge over Ethernet" mode in the Quick Connect setup to use this mode.

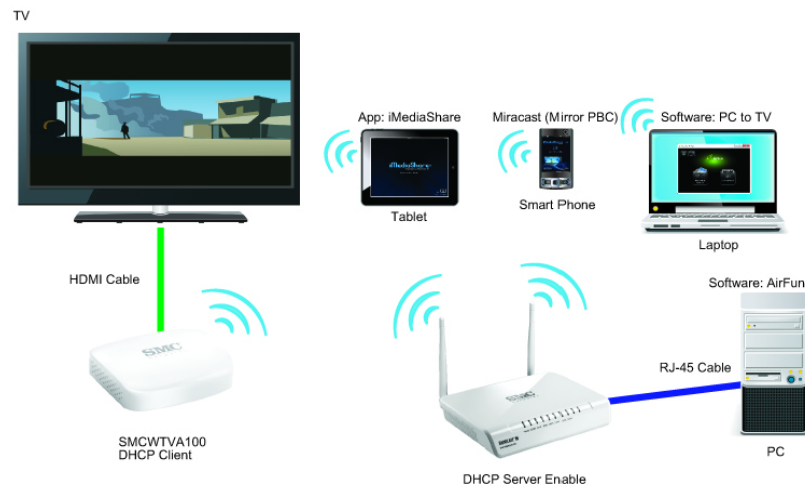
Figure 10: “Wired” Connection Setup



WIRELESS CONNECTION SETUP

In this mode, as shown in [Figure 11](#), your SMCWTVA100 connects directly to a local WLAN using its Wi-Fi interface. All devices (except those using Miracast) can connect to the SMCWTVA100 over the local W/LAN in order to screencast. Use the “Bridge over Wireless” mode in the Quick Connect setup to use this mode.

Figure 11: Wireless Connection Setup



HARDWARE RESET TO FACTORY DEFAULT SETTINGS

To reset all configuration to the factory default press the Mode and Power On/Off button (see [“Key Hardware Features” on page 16](#)) simultaneously for five (5) seconds.

The SMCWTVA100 will reboot and initialize with its original factory default configuration.



NOTE: Power must be connected to the SMCWTVA100 while you are simultaneously pressing the Mode and Power On/Off buttons for 5 seconds.

4

SOFTWARE INSTALLATION

This chapter shows you how to quickly install both the AirFun and PC to TV software plus the iMediaShare App. The chapter includes:

- ◆ [PC to TV and AirFun Installation \(Windows\)](#)
- ◆ [iMediaShare App Installation \(Android\)](#)
- ◆ [iMediaShare App Installation \(iOS\)](#)

PC TO TV AND AIRFUN INSTALLATION (WINDOWS)

To install the PC to TV and AirFun software for Windows 7, Windows XP, or Windows Vista, follow these steps:



NOTE: Only the installation interface for Windows 7 is shown in this guide. However, the utility installation screens are similar for all Microsoft Windows systems.

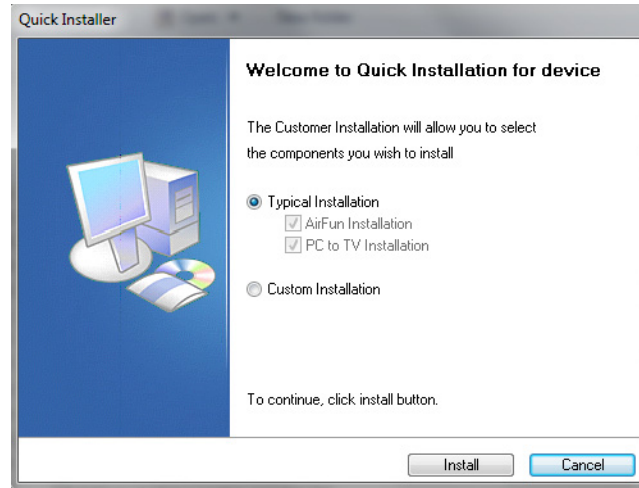
1. From the Resource CD, double click on the “QuickInstall” icon. Follow the on-screen instructions and click “Next” to continue installing and click Back to make changes to previous settings. Click “Cancel” to stop the installation.

Click on “Software Installation” to start installing Airfun and PC to TV.

Figure 12: Setup Wizard Start



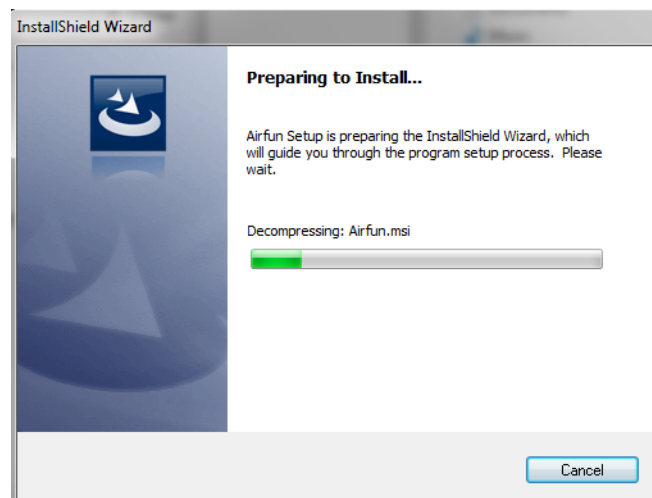
2. Select "Typical Installation" to install both Airfun and PC to TV software. Otherwise, select "Custom Installation" to install only one of the two. When you have made your selection, click "Install".



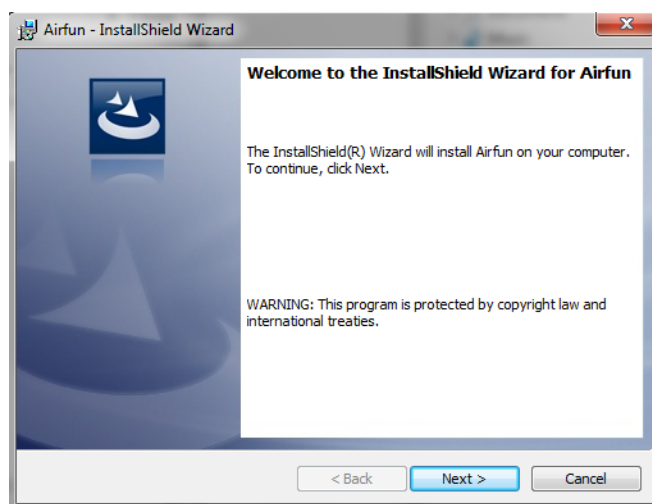
3. From the drop-down menu select the desired language and then click the left button at the bottom to continue.



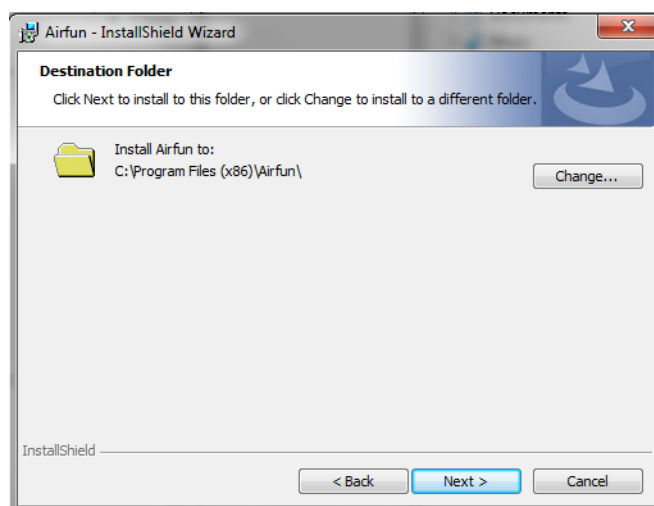
4. Wait for the software preparation procedure to complete.



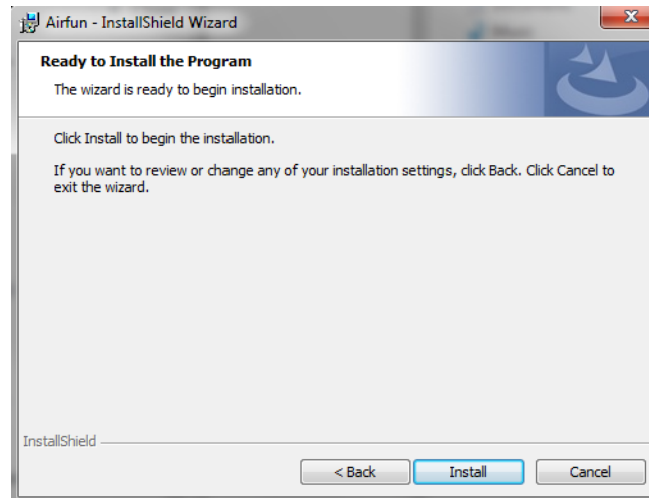
5. When the install preparation is completed click Next to continue the Airfun install.



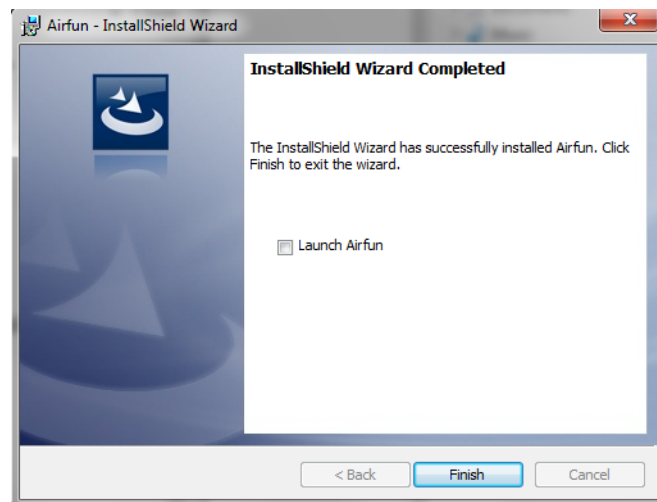
6. Select the target install folder for the Airfun software or click the "Change" button and select a new folder. When ready click Next.



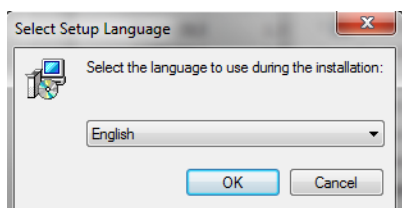
7. Confirm that you are ready to install Airfun. Click Back to change your Airfun install settings otherwise click "Install" to continue the Airfun software installation.



8. When the Airfun software is installed the "Wizard Completed" box will appear. Check the Launch "Airfun" box and click "Finish" if you want to use Airfun immediately. Otherwise, click the Finish button without launching Airfun to begin the PC to TV installation.



9. Select the desired language from the drop-down menu and click "OK".



10. In the welcome screen click the Next button.



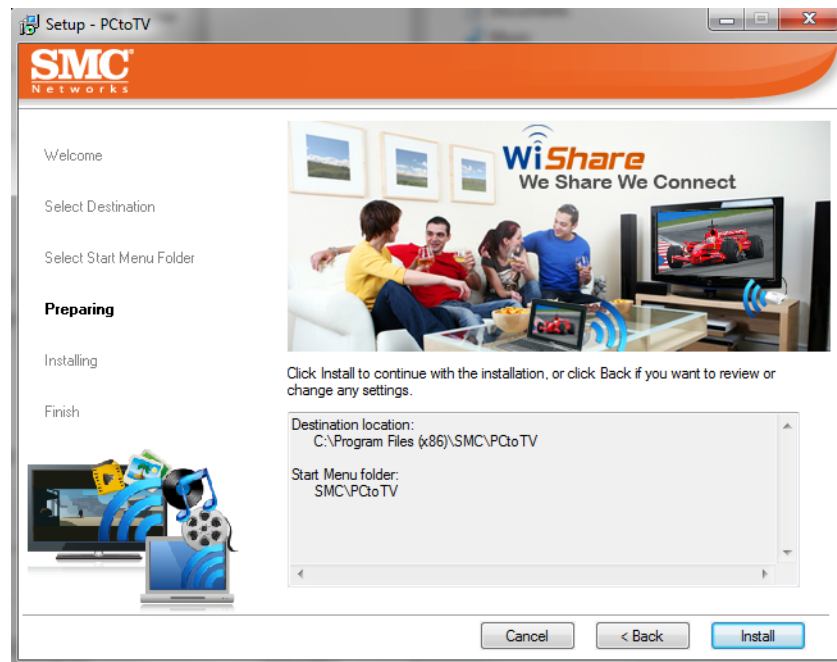
11. Click Next to accept the target directory for the PC to TV software installation. Otherwise, select a new target directory by clicking the "Browse" button and then click Next.



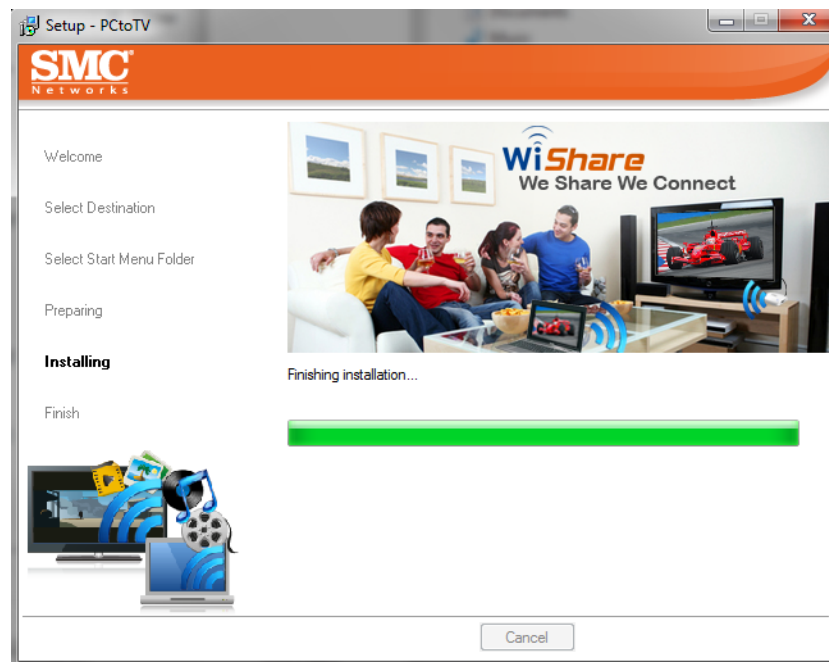
12. To accept the default start menu location click Next. Otherwise click Browse to select a new start menu location and then click Next.



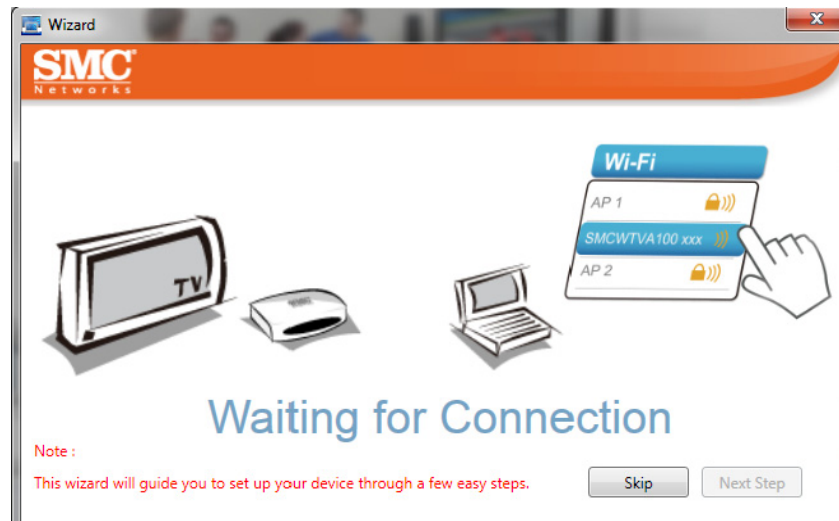
13. Verify the target installation directory and the start menu location and then click Install.



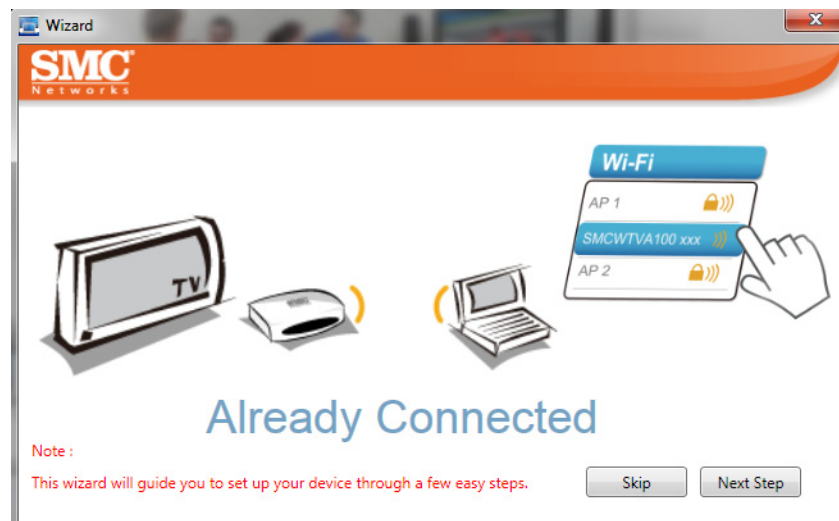
14. Wait for the software installer to complete.



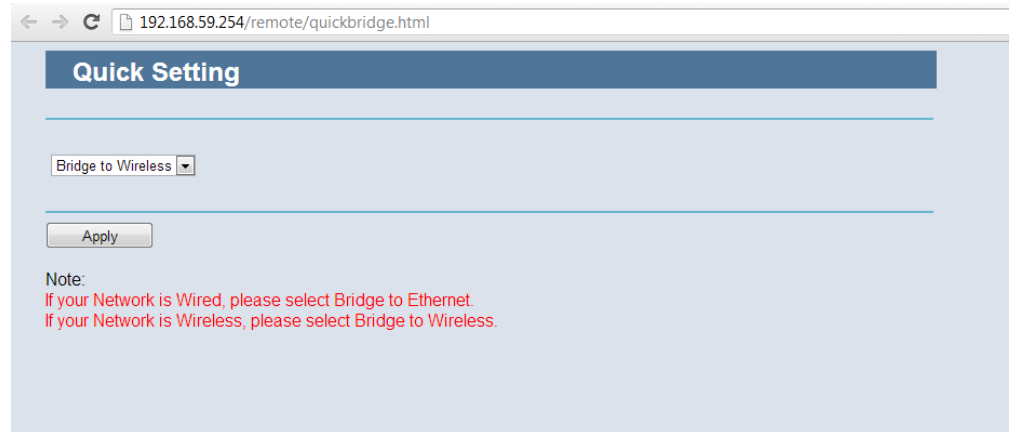
15. When the "Waiting for Connection" box appears, connect your PC to the SMCWTV100 over wireless and wait for the Next Step button to become solid.



16. Click the Next Step button when it becomes solid (it becomes solid when the installer has detected a wireless connection to the SMCWTV100).



17. The installer will launch the Quick Settings menu in your browser. Select the network connection suitable for your network and click "Apply". See [Step 6 on page 23](#) of the device connection procedure.



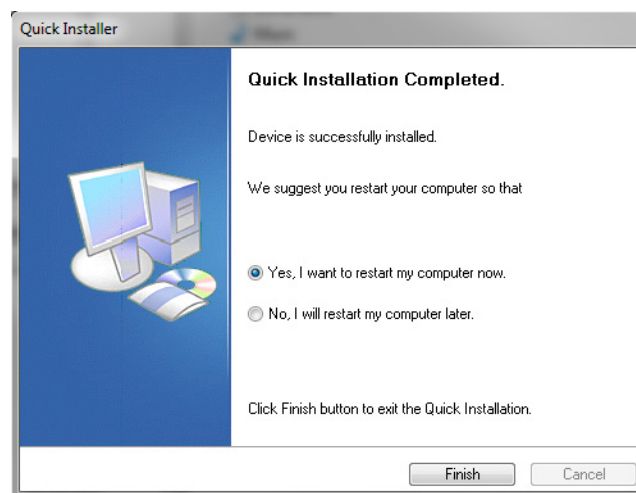
Select one of three modes:

- Bridge to Wireless—The SMCWTVA100 connects to a local WLAN over wireless and bridges Internet connectivity from the WLAN to your PC, smartphone or tablet.
- Bridge to Ethernet—The SMCWTVA100 connects to a local LAN over Ethernet cable and bridges Internet connectivity from the LAN to your PC, smartphone or tablet.
- Virtual AP—The SMCWTVA100 operates in stand-alone mode without Internet.

18. The PC to TV software installer is finished. Click "Finish" to close the installer.



19. Once the installation is completed, the PC to TV software requires the PC to reboot before you can use it. Make sure you reboot the PC before using your new software.



iMEDIASHARE APP INSTALLATION (ANDROID)

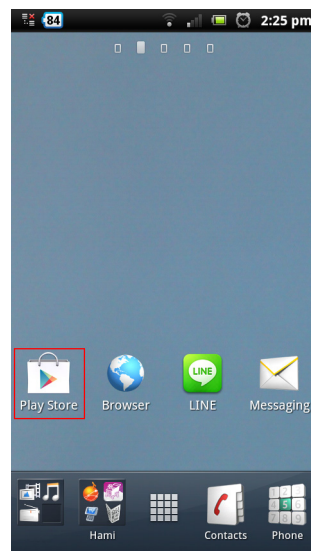
To install the iMediaShare app for an Android smartphone or tablet, follow these steps:



NOTE: Only the installation interface for an Android smartphone is shown in this guide. However, the app installation screens are similar for all Android systems.

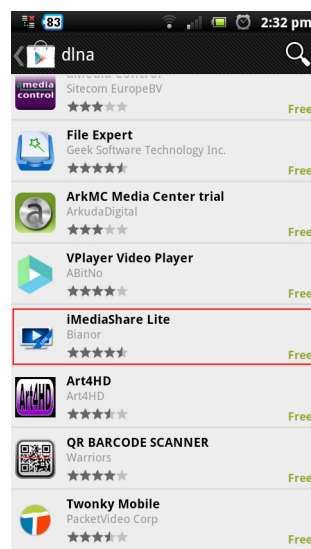
1. Go to Google Play from the smartphone desktop.

Figure 13: Google Play Store



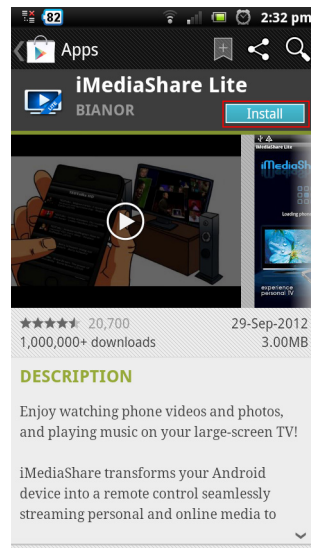
2. Search DLNA software app, then select "iMediaShare Lite".

Figure 14: Search DLNA Software App - Android Users



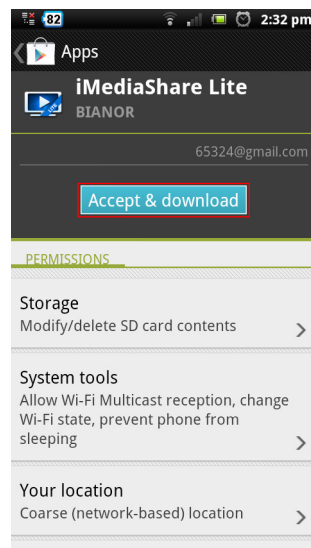
3. Click "Install" to start the installation.

Figure 15: Install iMediaShare App - Android Users



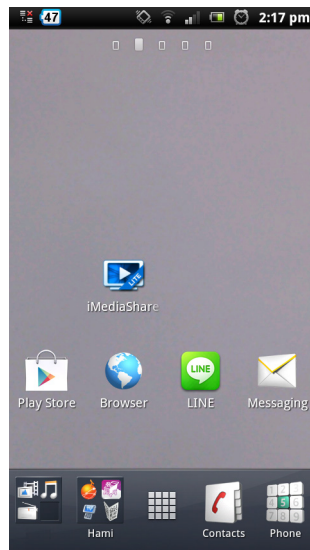
4. Click "Accept & download".

Figure 16: Download iMediaShare App - Android Users



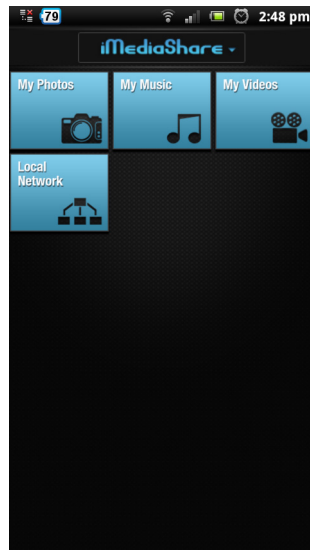
5. The iMediaShare app is installed.

Figure 17: iMediaShare App is Installed - Android Users



6. Launch iMediaShare app and start to share your photos, music and videos.

Figure 18: Launch iMediaShare App - Android Users



iMEDIASHARE APP INSTALLATION (iOS)

To install the iMediaShare app for an iPad or iPhone, follow these steps:



NOTE: Only the installation interface for an iPad is shown in this guide. However, the app installation screens are similar for all iOS systems.

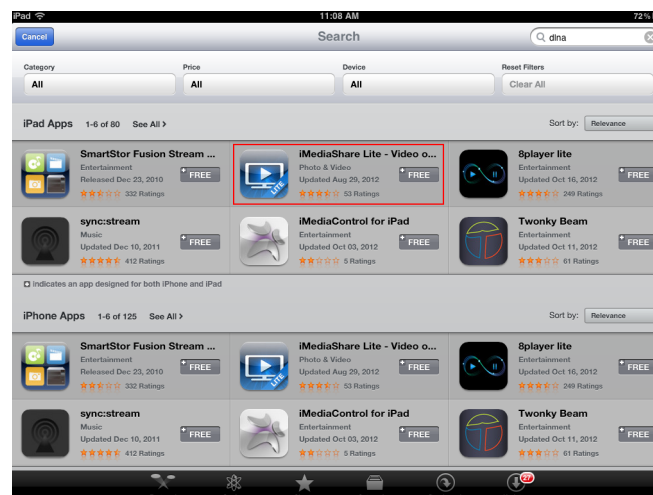
1. Go to App Store from the iPad desktop.

Figure 19: App Store



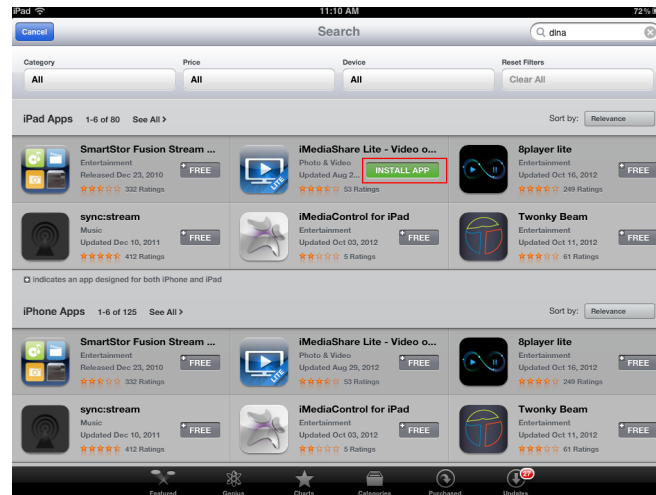
2. Search DLNA software app, then select "iMediaShare Lite".

Figure 20: Search DLNA Software App - iOS Users



3. Click “Install App” and wait for the software installation procedure to complete.

Figure 21: Install iMediaShare App - iOS Users



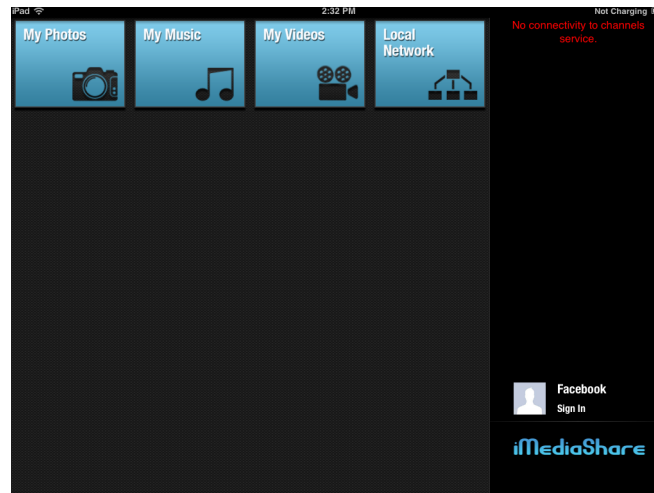
4. The iMediaShare app will display on the desktop when installation is complete.

Figure 22: iMediaShare App Install Complete - iOS Users



5. Launch iMediaShare app and start to share your photos, music and videos.

Figure 23: Activate iMediaShare App - iOS Users



This chapter includes these sections:

- ◆ [PC to TV Mode](#)
- ◆ [Mirror PIN and PBC Mode](#)
- ◆ [Media Share Mode \(DLNA Mode\)](#)
- ◆ [NAS \(USB\) Mode](#)
- ◆ [Firmware Upgrade](#)
- ◆ [Remote Options](#)
- ◆ [Setup Using the OSD Menu](#)

PC TO TV MODE

PC to TV mode allows the SMCWTVA100 to screencast your PC display image to the display device connected to the HDMI/CVBS output ports. Any video, image, document and presentations can be instantly displayed from your PC to a television, projector or separate monitor.

USING PC TO TV (WINDOWS PC USERS)

1. Make sure the PC has IP connectivity with the SMCWTVA100. Connect the PC either directly over Wi-Fi connecting the PC to the SMCWTVA100 access point, or connect the SMCWTVA100 to a local LAN or WLAN which your PC can also access. See "[Connect a Device to the SMCWTVA100](#)" on page 21".
2. Connect the HDMI or CVBS output to the display system you would like to use.
3. Press the mode button on the SMCWTVA100 until it is in the PC to TV mode.

Figure 24: PC to TV Mode Screen



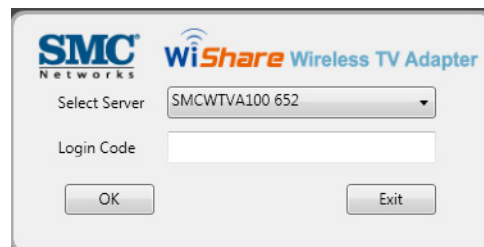
4. Start the PC to TV client program already installed on the PC, either from the Start menu or clicking on the PC to TV shortcut icon.

Figure 25: PC to TV Icon



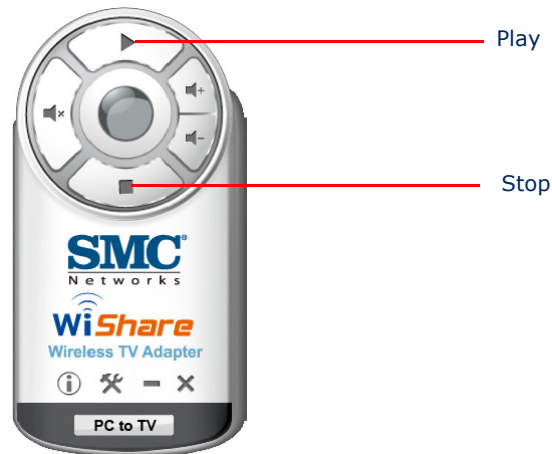
5. The PC to TV Server Selection and Login window (Figure 26) will appear; select the correct SMCWTVA100 xxx and input the login code. Your SMCWTVA100 "xxx" number and login code is on the PC to TV mode screen on your display system, see Figure 24. Click the OK button and the PC to TV controller will appear.

Figure 26: PC to TV Server Selection and Login Window



6. Click the Play button on the PC to TV controller to screencast your PC display to the television, projector or monitor, see Figure 27 on page 47.

Figure 27: PC to TV Controller



7. To stop screencasting your PC display, simply click the stop button.

ADDITIONAL PC TO TV CONTROLLER MENU ITEMS



Click the Mute button to reduce the audio output level to zero.



Click the Volume Up button to increase the audio output level.



Click the Volume Down button to decrease the audio output level.



Click the Information icon to display current SMCWTVA100 configuration information.



Click the Tools icon to access a pull down menu. Items available are Panel Control—Play/Stop, Webpage—Configuration (Web UI)/Remote, Information (see above item), and Exit.



Click the minimize icon to minimize the PC to TV controller.



Click the close program icon to exit and close the PC to TV controller.

MIRROR PIN AND PBC MODE

Mirror PBC and PIN mode allows you to screencast (display or mirror it on another screen) your Android device screen to a TV display. You can use it to display any content currently viewable on your Android device's screen onto a television or other display device. Your Android device can stream up to 1080p HD video and 5.1 surround sound to the SMCWTVA100's output. Mirror PIN and PBC both use a protocol called Miracast in order to stream display and audio content.



NOTE: Only certain Android devices support Miracast. Please check the latest update list of supported devices on the SMC website.

Using Mirror mode you can play back video, audio and image files from your Android devices similar to DLNA. However, using Mirror mode the display possibilities are limitless since it can display anything that is presented on your Android device. So business presentations, training presentations, or anything else you would like to present can now be done from your mobile smartphone anywhere you can connect the SMCWTVA100 to a display.



NOTE: Only Android version 4.2 (updated version of Jelly Bean) supports the Miracast wireless display standard.

MIRROR PBC VERSUS PIN MODE

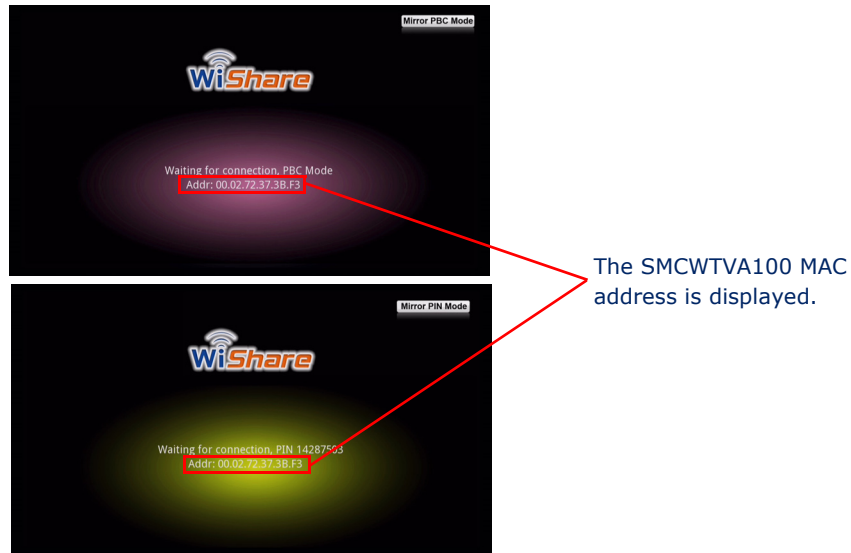
Mirror Push Button Configuration (PBC) provides Miracast protocol functionality to screencast your android device's display immediately upon connection.

When using Mirror Personal Input Number (PIN) upon a successful Miracast connection, the display is not immediately screencast. First, a PIN code is displayed from the SMCWTVA100 onto the TV display which then must be entered into the Android device, as a security precaution, in order to begin screencasting.

SETUP MIRROR PBC OR PIN FROM AN ANDROID DEVICE

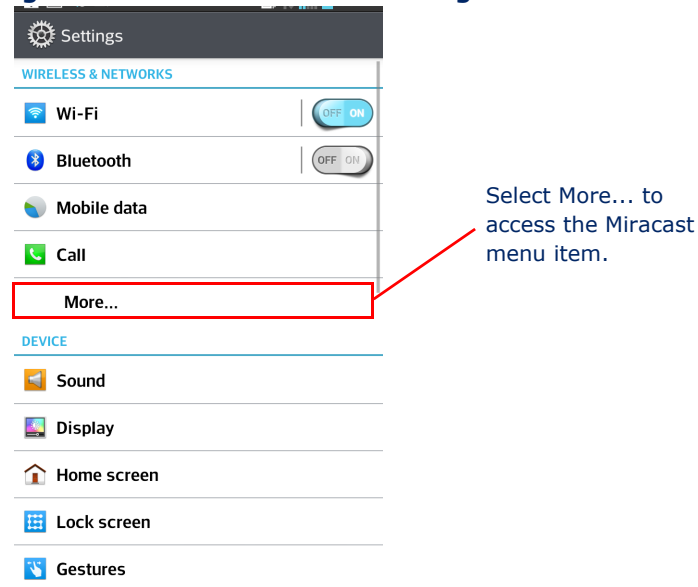
1. Click the mode switch on the side of the SMCWTVA100 until it is in either the Mirror PBC or PIN mode.

Figure 28: Mirror Mode—SMCWTVA100 in Mirror PBC and PIN Mode.



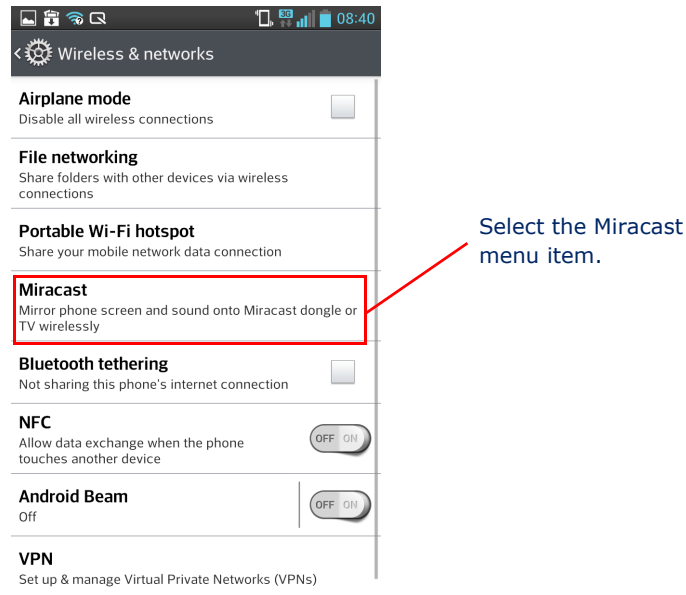
2. On your Android device, enter the settings menu for the device and select the "More..." menu item.

Figure 29: Mirror Mode—Accessing Miracast Within Android



3. In the “More...” menu item select “Miracast”

Figure 30: Mirror Mode—Launching Miracast.



4. Slide the switch at the right top of the screen to On. The Android device should find the SMCWTVA100 and list its MAC address, which is also displayed on the HDMI or CVBS output screen.

Figure 31: Mirror Mode—Selecting the SMCWTVA100



SEARCH

HELP

5. Select the device MAC address in the list. The "Connecting.." diagram will be displayed on the Android while the device is connected to the SMCWTVA100 over the Miracast protocol.

Figure 32: Mirror Mode—Connecting



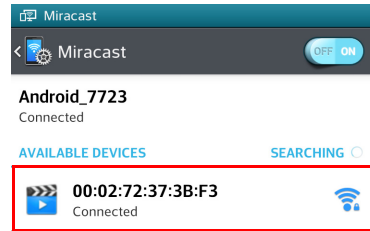
Wait for the connection. If you are using PIN mode, input the PIN code shown on the display output of the SMCWTVA100.



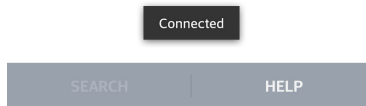
NOTE: PIN mode may not be supported by your device. Should it fail to operate with the SMCWTVA100, check if your device supports PIN mode with your device's manufacturer.

6. After a few moments, you should see a “Wi-Fi Direct Succeed (Wait IP)” message on the SMCWTVA100 display output and then, a moment later, the Android device screen is displayed.

Figure 33: Mirror Mode—Connected



When connected you should see your Android screen shown on the display connected to the SMCWTVA100.



MEDIA SHARE MODE (DLNA MODE)

- USING AIRFUN (WINDOWS PC USERS)**
1. Put the SMCWTV100 into Media Share mode using the Mode button.

Figure 34: Media Share Mode



2. Start the Airfun software on your PC.
3. Select "SMCWTV100" from the detected device list and click "Connect." Now the TV adapter is connected.

Figure 35: Connect to SMCWTV100



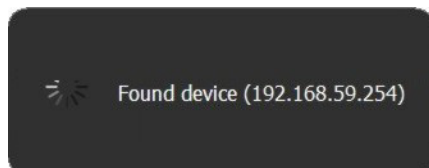
4. Click the AirFun icon on your desktop to launch the software.

Figure 36: Launch AirFun



5. AirFun will connect to the TV adapter automatically.

Figure 37: Search and Connect to Device



6. The AirFun main screen displays.

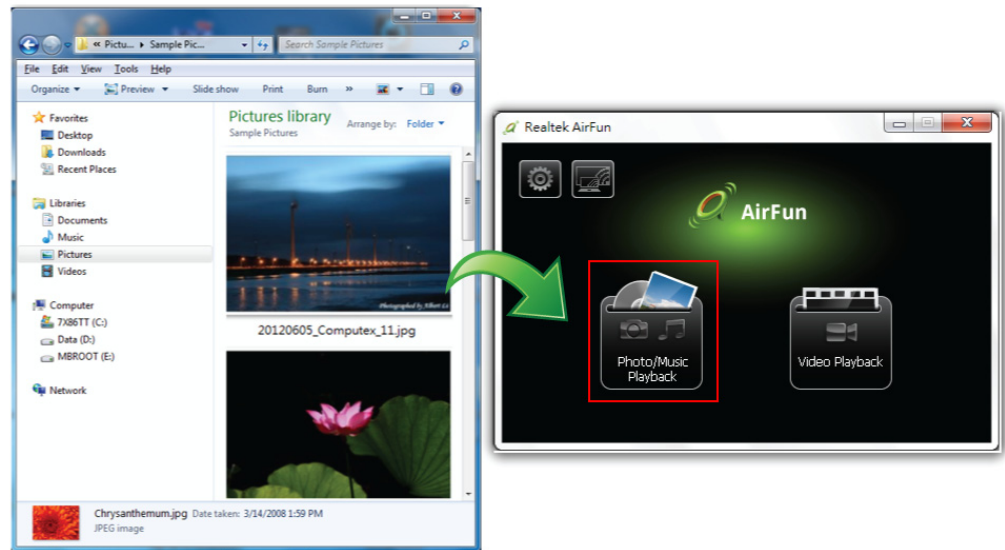
Figure 38: AirFun Activate



VIEW PHOTOS

7. Select the photo from the local PC and drag it to AirFun main screen "Photo/Music Playback" folder. Then click "Play".

Figure 39: Select Photos



8. The selected photo will display on your TV/monitor or projector.

Figure 40: View Photo

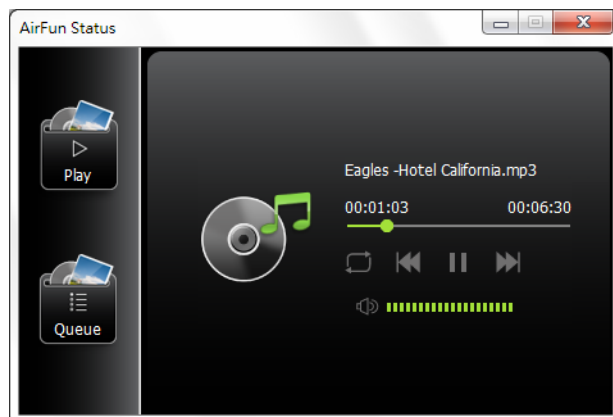


9. To stop displaying photos at any time, click the red box with a white X located in the upper right corner of the Airfun photo window.

PLAY AUDIO FILES

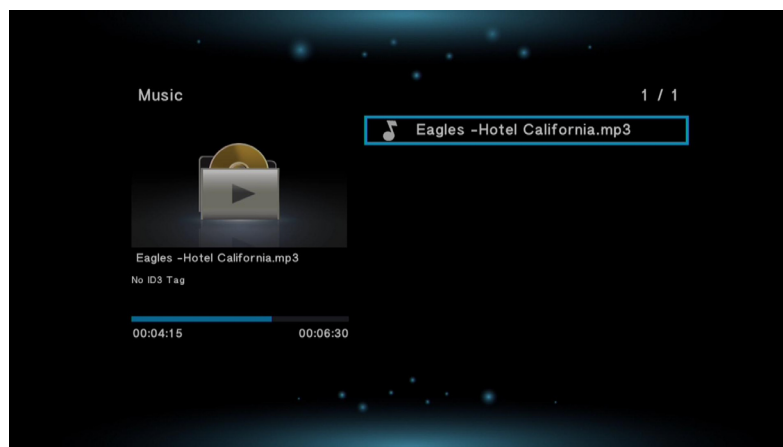
10. Select the audio file from the local PC and drag it to the AirFun main screen "Photo/Music Playback" folder. Then click "Play".

Figure 41: Select Audio File



11. The selected audio file will start to play on your TV/monitor or projector.

Figure 42: Play Audio File

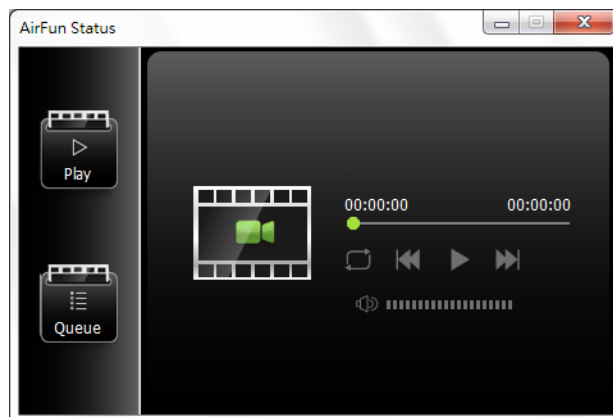


12. To stop playing audio at any time, click the red box with a white X located in the upper right corner of the Airfun audio player window.

PLAY VIDEO FILE

13. Select the video file from the local PC and drag it to the AirFun main screen "Video Playback" folder. Then click "Play".

Figure 43: Select Video File



14. The selected video file will start to play on your TV/monitor or projector.

Figure 44: Play Video



15. To stop playing a video at any time, click the red box with a white X located in the upper right corner of the Airfun video window.

For other software advanced settings, see ["Remote Options" on page 65](#).

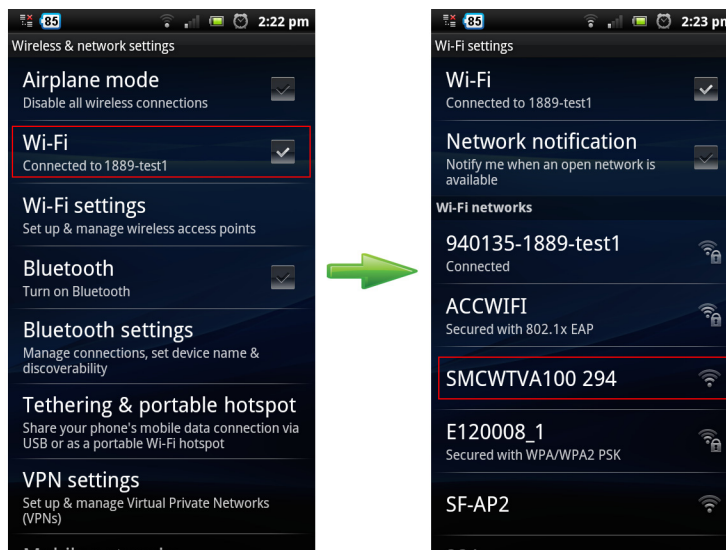
USING IMEDIA SHARE (ANDROID USERS)

1. Enable your Wi-Fi connection and Connect to the SMCWTVA100 with ID "SMCWTVA100 XXX".



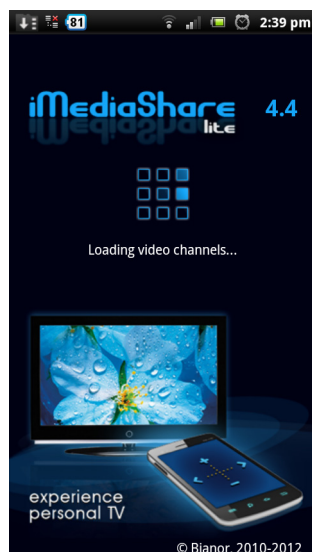
NOTE: Make sure the SMCWTVA100 is in MediaShare mode.

Figure 45: Connect to SMCWTVA100



2. Launch the "iMediaShare" program and follow the instructions below to share the photo, music, or video.

Figure 46: Launch iMediaShare

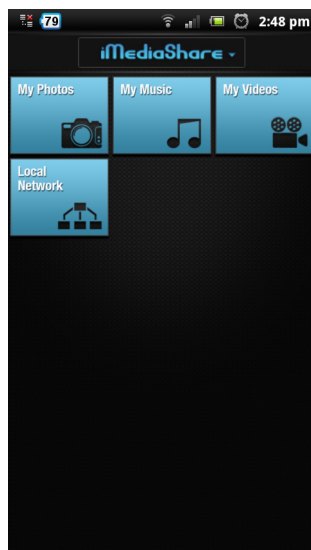


3. From the screen, select the desired file type to play.



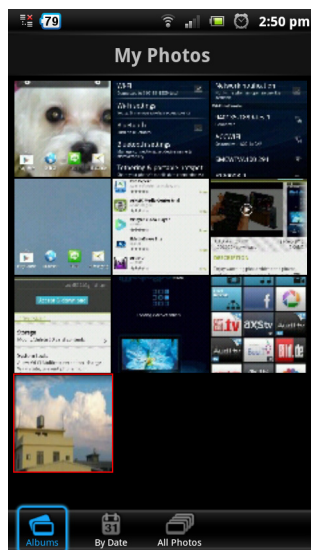
NOTE: Only the photo display is shown in this section, music and video display screens are similar to the photo display.

Figure 47: Select the Desired File Type



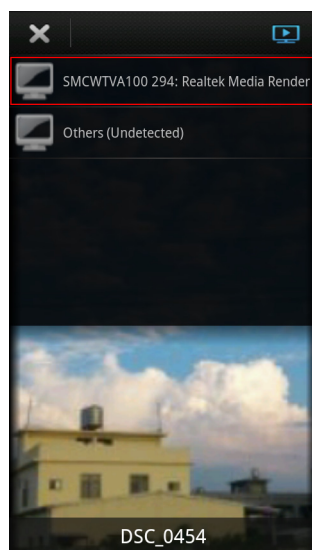
4. Select the photo from albums.

Figure 48: Select a Photo



5. Select "SMCWTVA100 XXX" from the media list.

Figure 49: Photo Ready for Display



6. The selected photo will display on your TV or monitor.

For other advanced settings, see ["Remote Options" on page 65](#).

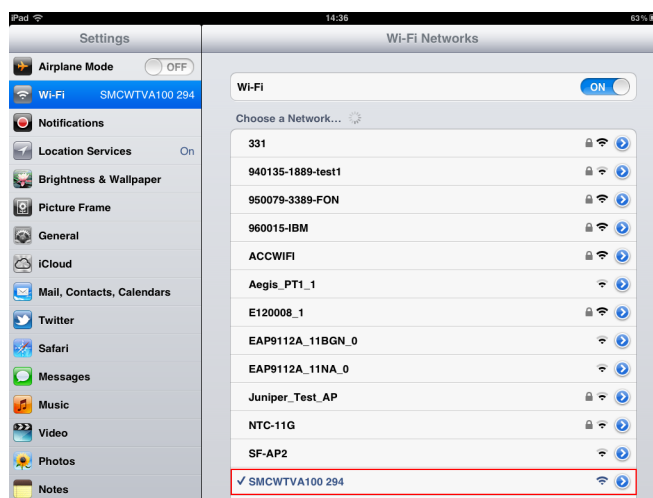
USING IMEDIA SHARE (IOS USERS)

1. Enable your Wi-Fi connection and connect to the SMCWTVA100 with ID "SMCWTVA100 XXX".



NOTE: Make sure the SMCWTVA100 is in MediaShare mode.

Figure 50: Connect to SMCWTVA100



2. Launch the “iMediaShare” program and follow the instructions below to share the photo, music, or video.

Figure 51: Launch iMediaShare

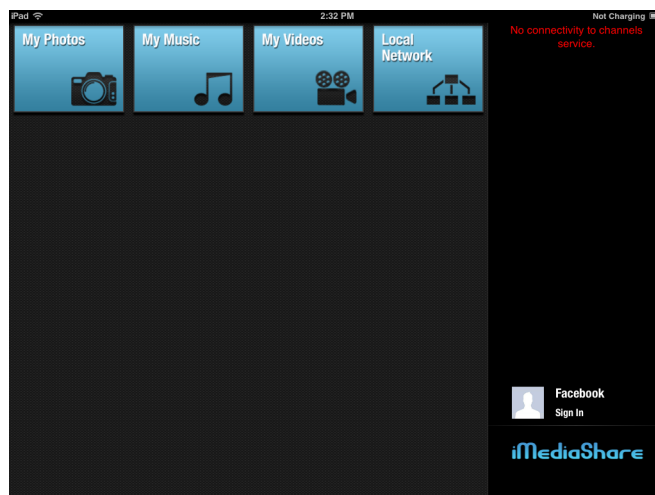


3. From the screen, select the desired file type to play.



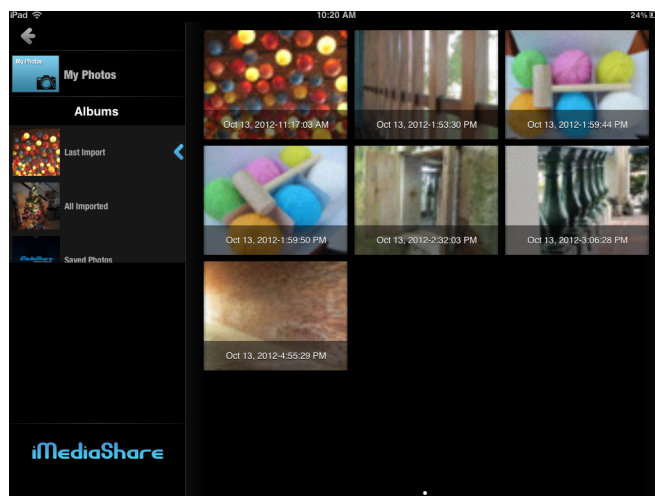
NOTE: Only the photo display is shown in this section, music and video display screens are similar to the photo display.

Figure 52: Select the Desired File Type



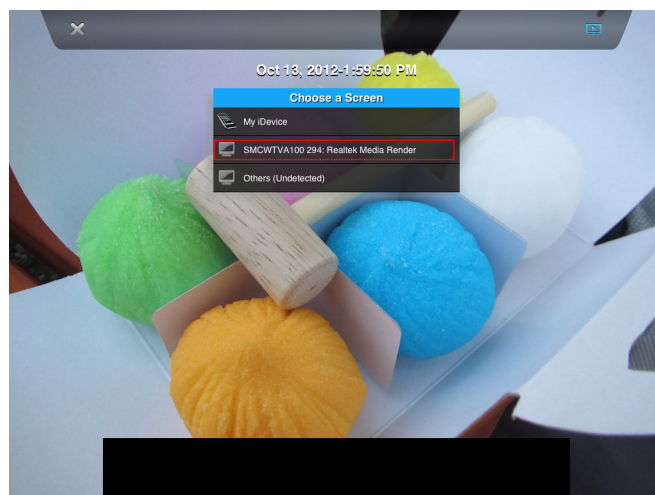
4. Select the photo from albums.

Figure 53: Select a Photo



5. Select "SMCWTV100 XXX" from the media list.

Figure 54: Photo Ready for Display



6. The selected photo will display on your TV or monitor.

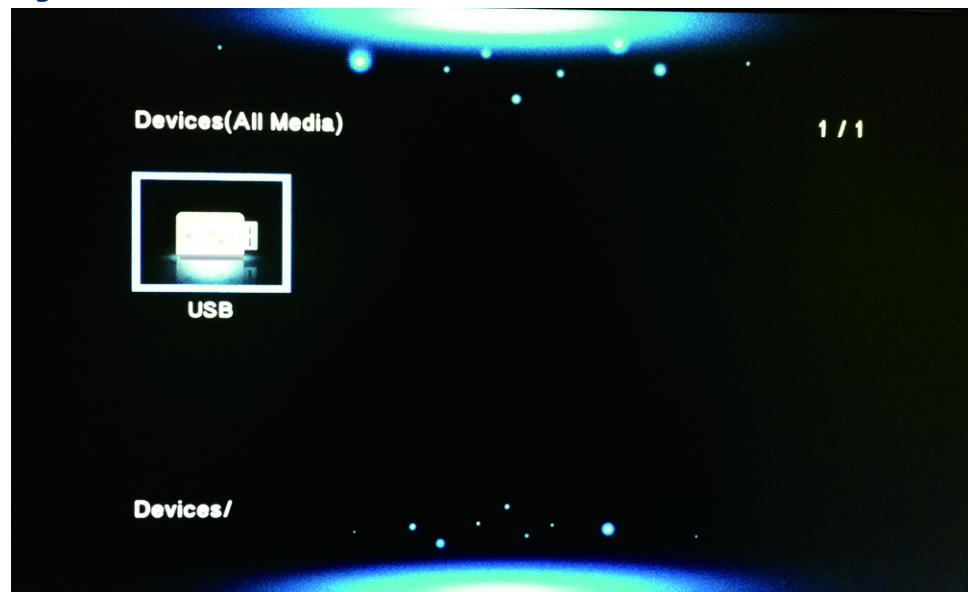
For other advanced settings, see ["Remote Options" on page 65](#).

NAS (USB) MODE

In NAS (USB) mode, the SMCWTVA100 becomes your media player. Simply insert a USB device with video, image, or audio files and the USB file system will be displayed on your TV display. You can then use the virtual remote to navigate to the files that you would like to play or view, and then launch them.

- USING NAS MODE**
1. Insert a USB flash stick into the SMCWTVA100 USB port.
 2. Make sure your PC, tablet or smartphone can communicate over IP with the SMCWTVA100 and launch the virtual remote—see [“Remote Options” on page 65](#).
 3. Press the Mode button until the SMCWTVA100 is in Media Share Mode.
 4. Wait for the USB file system to appear on your display system.

Figure 55: USB Mode

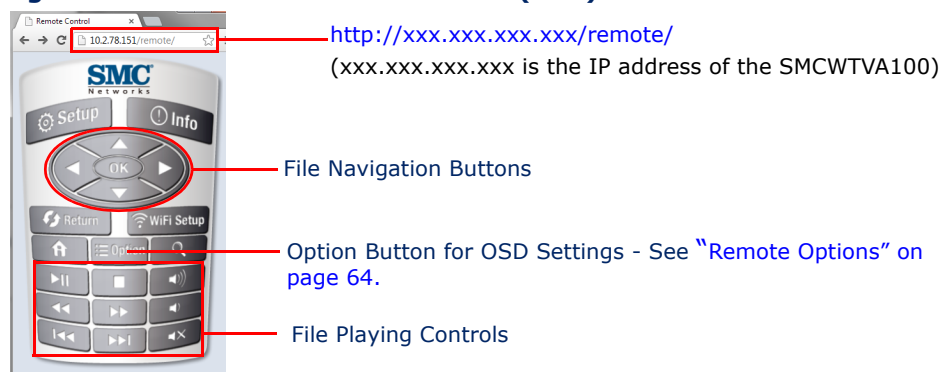


5. Use the web browser remote control to navigate through the folder system of your USB stick to select the video, image or audio file you wish to play or view and then click OK.

See [Figure 56 on page 64](#) and [“Additional Controls In NAS \(USB\) Mode” on page 64](#) for more information.

6. Click the Remote Option button to launch optional On-Screen Display (OSD) controls while playing or viewing the file. For information on using the remote options, see [“Remote Options” on page 65](#).

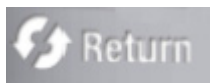
Figure 56: Remote Functions for NAS (USB) Mode



ADDITIONAL CONTROLS IN NAS (USB) MODE



Click the Home button to go back to the top of the file system.



Click the Return button to go back to the previous page.



Click the Zoom button to toggle the screen zoom level to 1x, 2x, 3x, 4x, or 8x.

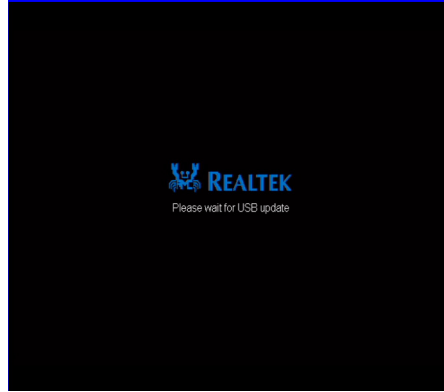
FIRMWARE UPGRADE

If the SMCWTV100 firmware needs to be updated, follow these steps to upgrade the firmware.

1. Plug your USB flash drive into your computer.
2. Download the latest firmware from the SMC website. (www.smc.com)
3. Plug the USB flash drive into the SMCWTV100 adapter and press the Power and Mode button at the same time.

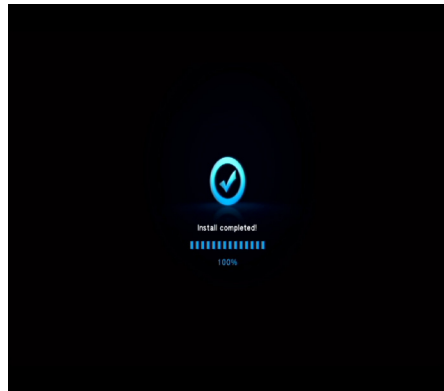
4. The device will upgrade the firmware automatically. The screen below will display on the TV/monitor.

Figure 57: Upgrade Firmware



5. The device starts to upgrade firmware.

Figure 58: Upgrade Firmware Completed



REMOTE OPTIONS

While using Airfun (or other DNLA media players) or USB mode you can change advanced settings of the media playback using the remote control; to access the remote control:



NOTE: You can access the remote control from a PC, tablet or smartphone.

1. Enter the URL of the SMCWTV100 (<http://xxx.xxx.xxx.xxx/remote>) in your web browser. A remote control will display. Use the navigation buttons and OK to select various media.

Figure 59: Remote Control

2. Click on the Setup button to display an OSD menu to configure network, audio, video and system settings. For further information see ["Setup Using the OSD Menu" on page 67](#).
3. While displaying image files or playing audio or video files, click the "Option" button to configure advanced OSD settings.
4. Depending on your media type you will be presented on the TV display with the optional settings as shown in [Table 4](#).

Table 4: Remote Option Button Menus

USB File System	Video Files	Image Files	Audio Files
Thumbnails	Subtitle 151	Slide Timing	Repeat off
List	Audio	Slide Transition	Repeat One
Preview	GOTO	Repeat off	Repeat all
Sort by Name	Repeat Title	Repeat all	Shuffle Loop
Sort By Date	Repeat All	Shuffle Loop	
All Media	Repeat Off	Video Setting	
Movies	Video Setting		
Photos			
Music			

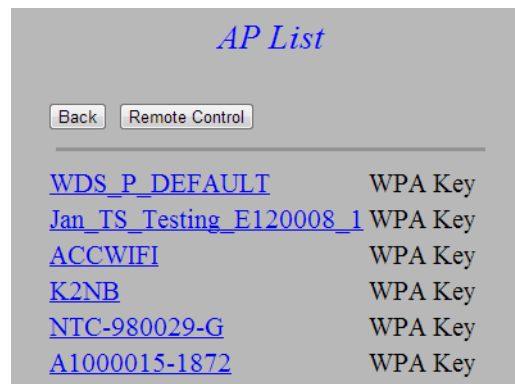
- Click "Info" to download the AirFun software.

Figure 60: Download AirFun Page



- Click "Wifi Setup" to configure Wireless LAN Setup.

Figure 61: Wireless LAN Setup



- Click "Return" to go back to previous page.

SETUP USING THE OSD MENU

There are four OSD setup menu items accessible using the Remote Setup button:

- **Network**—Sets wireless or wired network settings.
- **Audio**—Sets advanced audio output settings.
- **Video**—Sets advanced video output settings.
- **System**—Options for the system language, upgrading the firmware, setting the SMCWTV100 to factory default values or displaying the current software versions.



NOTE: To access the remote, see ["Setup Using the OSD Menu" on page 67](#)

Figure 62: Setup Main Page



NETWORK Use the navigation buttons on the remote to select the Network menu and click OK. The following menu items are available:

- **Wired Connection**—Select this item to change the SMCWTVA100 IP settings to either DHCP or Fixed IP.
- **Device Name**—Select this option to set a new device name for the SMCWTVA100. Note the default name is always: SMCWTVA100 xxx.
- **WIFI Connection**—In Bridge to Wireless mode select this option to connect the SMCWTVA100 to a Wi-Fi access point.
- **Virtual AP Setup**—Use this menu item to change the SMCWTVA100's wireless access point settings such as:
 - radio band (2.4 or 5 GHz)
 - wireless security (disabled or WPA/WPA2)
 - wireless security password

- wireless operating region (select a country matching your region)
- **Virtual AP Bridge**—Depending on your SMCWTV100 connection setup select the appropriate connection mode here for either wired, wireless or stand-alone operation. See ["" on page 19"](#).

AUDIO Use the navigation buttons on the remote to select the Audio menu and click OK. The following menu items are available:

- **Night Mode**—Sets the audio output to night mode ON, OFF or Comfort.
- **HDMI Output**—Sets the HDMI audio output to HDMI LPCM, HDMI RAW or HDMI Auto.
- **Surround Sound**—Sets the surround sound audio output to Auto, 5.1 mode. or HD Audio.
- **Lip Sync**—Sets the Lip Sync mode to Auto, Manual or Off.

- VIDEO**
- **Aspect Ratio**—Sets the display signal output screen ratio to one of:
 - Pan Scan 4:3
 - Letter Box 4:3
 - 16:9
 - 16:10
 - **TV System**—Sets the display signal output screen ratio to one of:
 - HDMI Auto
 - 480P
 - 576P
 - 720P 50 Hz
 - 720P 60 Hz
 - 1080i 50 Hz
 - **Scale Video Output to 90%**—Scales the video output to 90% when toggled to ON (the default is OFF).
 - **1080P 24Hz**—Sets the display signal output screen to 1080P at 24 Hz refresh rate when toggled to ON (the default is OFF).

SYSTEM

- **Language**—Selects the menu language. Select either: English, Mandarin, Japanese, Spanish, French, German, or Italian.
- **Factory Default**—Returns the SMCWTVA100 to the factory default configuration for all settings.
- **Version Info**—Displays a list of all software versions currently installed on the SMCWTVA100.
- **USB Upgrade**—If you have inserted a USB memory stick with a new firmware version on it, then selecting this menu item will start the firmware upgrade.

This chapter describes how you can use the built-in Web User Interface (Web UI) to configure the following SMCWTVA100 settings:

- [Network Topology and Settings](#)
- [Wireless Configuration](#)
- [Display Output Setting](#)
- [Web UI Password](#)
- [Mode Setting](#)

The Web UI also provides additional functions:

- [Status](#)
- [Configuration](#)
- [Remote](#)
- [Restart](#)

NETWORK TOPOLOGY AND SETTINGS

You can configure how the SMCWTVA100 is connected to your local network and whether to use DHCP or statically configure the IP settings.

QUICK SETTING You will be automatically directed to the Quick Setting menu when your SMCWTVA100 is new or you have reset to factory configuration. Use this menu to configure the SMCWTVA100 to connect to a local LAN over either wireless or Ethernet. See the section ["" on page 19](#) for more information on how to use this menu item.

NETWORK SETTINGS If you want to connect your SMCWTVA100 to a local LAN, use this menu to configure its IP settings.

Figure 63: Network Settings

IP ADDRESS SETTINGS

- **Obtain an IP address automatically**—Check this radio button here to set the SMCWTVA100 to use DHCP to automatically receive its network IP settings from the LAN you connect it to.
- **Use the following address:**—Check this radio button to configure the SMCWTVA100 IP settings manually:
 - **IP Address**—Enter the IPv4 address that the SMCWVTA100 is assigned for the local LAN.
 - **Subnet Mask**—Enter the 32 bit subnet mask that the local LAN requires.
 - **Gateway Address**—If you need to route IP packets outside the local LAN, enter the IPv4 address of the designated gateway router.
- **DNS Address**—If you need to use a specific Domain Name Server, enter its IPv4 address here.

WIRELESS CONFIGURATION

If necessary you can modify the SMCWTVA100's Wi-Fi SSID name, wireless band and security settings to match your requirements.

BASIC SETTINGS Within this menu, you can change the name of the 802.11 wireless SSID that is broadcast by the SMCWTVA100.

Figure 64: Wireless Settings - Basic Setting

- **Device Name(SSID)**—Input an SSID name (Maximum 20 alphanumeric characters).

SECURITY SETTINGS The Security Settings allow you to turn on WPA2/WPA encryption settings to secure access to the SMCWTVA100 wireless AP.

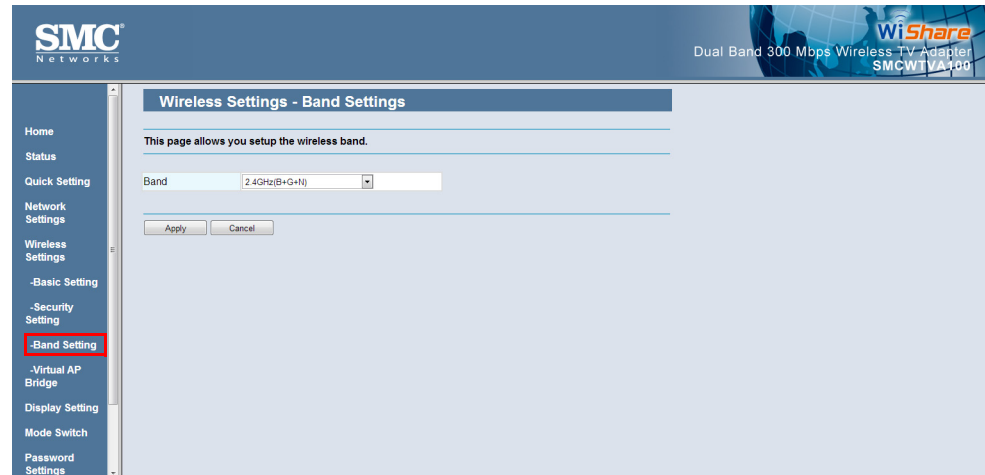
Figure 65: Wireless Settings-Security Settings

- **Encryption**—From the drop-down menu, select either the WPA2/WPA security/encryption standard or Disabled to turn off security and encryption.
- If the Encryption setting is set to WPA2/WPA then enter a password to be used to gain access to the SMCWTVA100 wireless AP.

BAND SETTINGS The SMCWTVA100 wireless AP can use either 2.4 or 5 GHz RF bands for wireless communication. Use this menu to select either band for your device's wireless connections. If the SMCWTVA100 will operate in a 2.4

GHz Wi-Fi coverage area then it is advisable to set the operation band to 5 GHz to reduce interference.

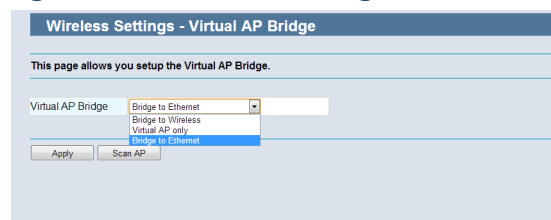
Figure 66: Wireless Settings-Band Settings



- **Band**—From the drop-down menu, select either the 2.4GHz (B+G+N) or 5GHz (preferred) option and click the Apply button to set the SMCWTVA100 wireless band.

VIRTUAL AP BRIDGE The Virtual AP Bridge menu item provides the same functionality as the Quick Setting menu item. From the drop-down menu you can select to connect the SMCWTVA100 to a local LAN either using a wireless or Ethernet cable connection. As in the Quick Setting menu item you can also select the Virtual AP option to use the SMCWTVA100 in standalone mode and connect your device directly to the SMCWTVA100 without internet.

Figure 67: Virtual AP Bridge



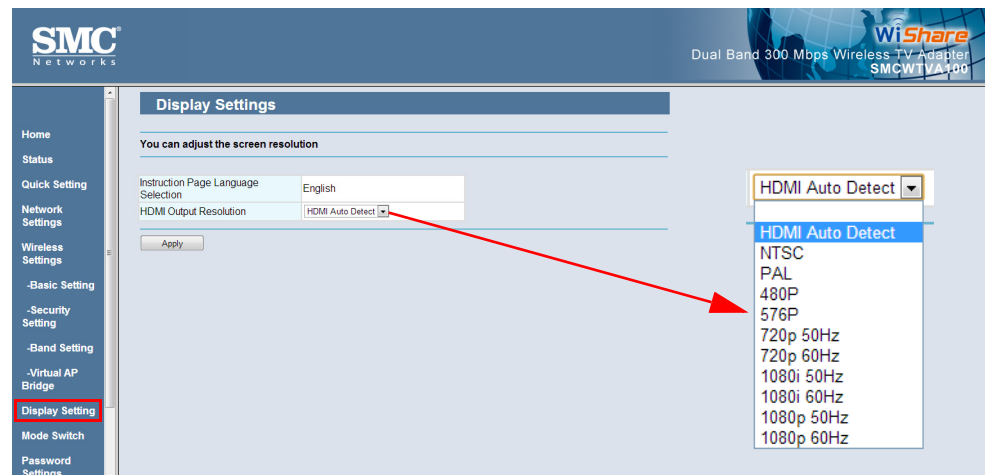
- **Virtual AP Bridge**—Click the down arrow to select one of the following items from the drop-down menu:
 - **Bridge to Wireless**—Select this item to set your SMCWTVA100 to connect a Wireless LAN. Using this option you can connect to SMCWTVA100 over the Wireless LAN or use the SMCWTVA100 wireless connection. When using the SMCWTVA100 wireless connection in this mode you can then access the local Wireless LAN and Internet through the SMCWTVA100 as a bridge.

- **Virtual AP only**—Select this item to set your SMCWTVA100 to operate in standalone mode and only provide a wireless connection to devices without internet.
- **Bridge to Ethernet**—Select this item to set your SMCWTVA100 to connect to a LAN over Ethernet cable. Using this option you can connect to SMCWTVA100 over the LAN or use the SMCWTVA100 wireless connection. When using the SMCWTVA100 wireless connection in this mode you can then access the local LAN and Internet through the SMCWTVA100 as a bridge.

DISPLAY OUTPUT SETTING

DISPLAY SETTING You can modify the screen resolution, refresh rate and television standard output of the HDMI port using this menu item. It is recommended to use the HDMI Auto Detect setting. If your screencast fails then select the display output setting that best matches your display device capability.

Figure 68: Display Settings



- **HDMI Output Resolution**—Click the down arrow to select the desired HDMI output signal.

WEB UI PASSWORD

PASSWORD SETTING To change the Web UI access password, select this menu item and enter the current password along with the new password (2x).

Figure 69: Password Setting

The screenshot shows the SMC Networks web interface. The left sidebar has a menu with items: Status, Quick Setting, Network Settings, Wireless Settings, -Basic Setting, -Security Setting, -Band Setting, -Virtual AP Bridge, Display Setting, Mode Switch, Password Settings (highlighted with a red box), Configuration, and Remote. The main content area is titled 'Password Settings' and contains the following text: 'You can change the password of the system required to log into the web management. The password can contain up to 20 alphanumeric characters and case sensitive.' Below this text are three input fields: 'Current Password', 'New Password', and 'Confirmed Password'. At the bottom of the form are 'Apply' and 'Cancel' buttons.

MODE SETTING

MODE SWITCH Besides the mode button located on the side panel of the SMCWTVA100, in this menu you can select to put the SMCWTVA100 into either PC to TV or Media Share mode.

Figure 70: Mode Switch

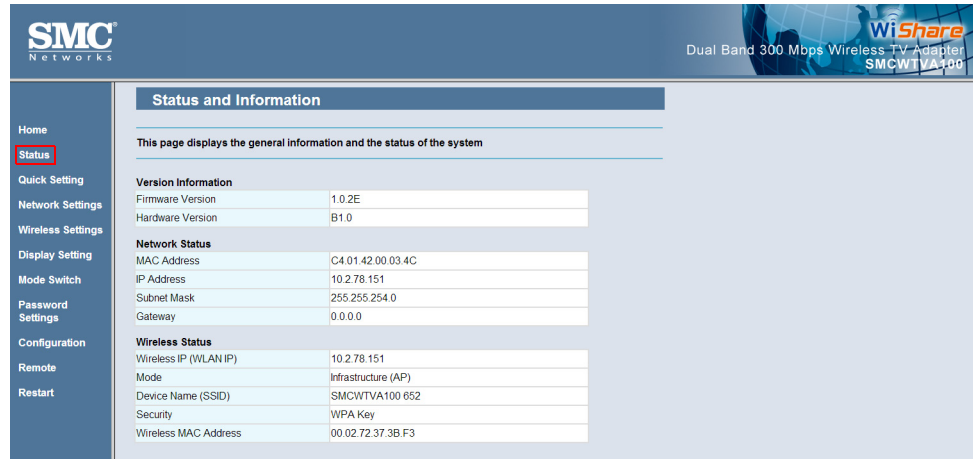
The screenshot shows the SMC Networks web interface. The left sidebar has a menu with items: Home, Status, Quick Setting, Network Settings, Wireless Settings, -Basic Setting, -Security Setting, -Band Setting, -Virtual AP Bridge, Display Setting, Mode Switch (highlighted with a red box), Password Settings, and Remote. The main content area is titled 'Mode Switch' and contains the following text: 'You can switch mode to Media share mode or PC to TV mode'. Below this text is a dropdown menu currently showing 'PC to TV mode'. A red arrow points from the dropdown menu to a larger, expanded version of the dropdown menu on the right. The expanded menu shows three options: 'PC to TV mode', 'PC to TV mode', and 'Media share mode'. Below the expanded menu is an 'Apply' button.

- Click the down arrow and select either PC to TV mode or Media Share mode and then click the Apply button.

ADDITIONAL FUNCTIONS

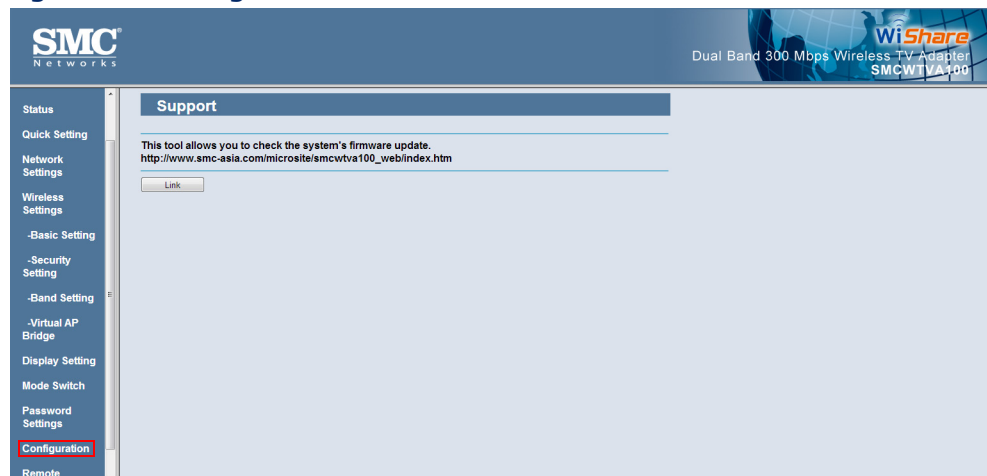
STATUS Click on the Status menu item to display the hardware, firmware and current network and wireless settings used by the SMCWTVA100.

Figure 71: Status Menu



CONFIGURATION Within the configuration menu item you can find a link button which will automatically load the SMC support page for the SMCWTVA100. On the support page you will find the latest updates, documents, drivers and firmware for the SMCWTVA100.

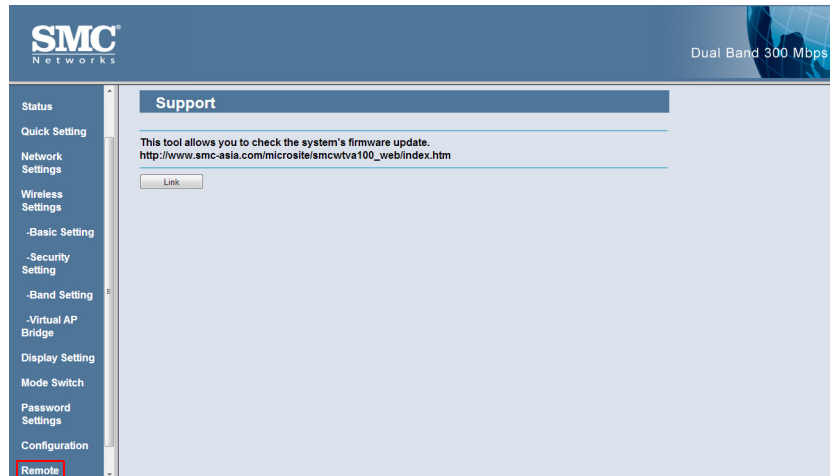
Figure 72: Configuration Menu Item



- Click on the Link button to access the SMC support page.

REMOTE The Remote menu item will bring up the virtual Remote controller within the framework of the Web UI.

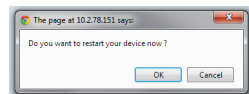
Figure 73: Remote Menu Item



◆ For further information, see ["Remote Options" on page 65](#)

RESTART Clicking the Restart menu item will reboot the SMCWTVA100. A confirmation dialog box will prevent you from accidentally rebooting the SMCWTVA100. Click the OK button to continue otherwise click Cancel to stop the reboot.

Figure 74: Restart Confirmation Dialog Box



**RESET TO FACTORY
DEFAULT
CONFIGURATION** See the section: ["Hardware Reset to Factory Default Settings" on page 27.](#)

PHYSICAL INTERFACE LAN Port:10/100 Mbps
 USB Input: USB2.0 Type A x 1 (firmware upgrade only)
 HDMI Output: HDMI x 1
 AV Composite
 Power Button
 Reset Button

WI-FI STANDARDS 2.4/5 GHz 802.11/b/g/n
 2.4 GHz Channels:
 11:(CH1-11): United Stated
 13:(CH1-13): Europe
 14:(CH1-14): Japan
 5.8 GHz Channels:
 12: United Stated
 13: Europe
 14: Japan

WIRELESS SIGNAL RATE Up to 300 Mbps

OS SUPPORT Windows XP/Visa/7/8, Apple iOS, Android

POWER SUPPLY External power adapter: 5V/1A

**ELECTORMAGNETIC
COMPATIBILITY** CE
 FCC
 BSMI

IMMUNITY EN55024
 IEC61000-4/2/3/4/5/6/8/11

EMISSIONS FCC

SAFETY LVD (EN60950)

SECURITY WPA

TEMPERATURE Operating: 0 °C to 40 °C (32 to 104 °F)
Storage: 0 °C to 40 °C (32 to 104 °F)

HUMIDITY Operating: 10% to 90% (non-condensing)
Storage: 10%-90% (non-condensing)



Headquarters

No. 1, Creation Rd. III
Hsinchu Science Park
Taiwan 30077
Tel: +886 3 5638888
Fax: +886 3 6686111

English: Technical Support information available at www.smc.com

English: (for Asia-Pacific): Technical Support information at www.smc-asia.com

Deutsch: Technischer Support und weitere Information unter www.smc.com

Español: En www.smc.com Ud. podrá encontrar la información relativa a servicios de soporte técnico

Français: Informations Support Technique sur www.smc.com

Português: Informações sobre Suporte Técnico em www.smc.com

Italiano: Le informazioni di supporto tecnico sono disponibili su www.smc.com

Svenska: Information om Teknisk Support finns tillgängligt på www.smc.com

Nederlands: Technische ondersteuningsinformatie beschikbaar op www.smc.com

Polski: Informacje o wsparciu technicznym są dostępne na www.smc.com

Čeština: Technická podpora je dostupná na www.smc.com

Magyar: Műszaki támogat információ elérhető -on www.smc.com

简体中文: 技术支持讯息可通过www.smc-prc.com查询

繁體中文: 產品技術支援與服務請上 www.smcnetworks.com.tw

ไทย: สามารถหาข้อมูลทางด้านเทคนิคได้ที่ www.smc-asia.com

한국어: 기술지원관련 정보는 www.smcnetworks.co.kr 을 참고하시기 바랍니다

INTERNET

E-mail address: www.smc.com → Support → By email

Driver updates: www.smc.com → Support → Downloads

A decorative graphic in the bottom right corner of the page, consisting of a grid of small, light blue diamonds arranged in a pattern that tapers to the right.

SMCWTVA100